



# **TOOLS for n Version2/Cubase AI 4**

## **Installation Guide Installationshandbuch Manuel d'installation Guía de instalación**

*English*

*Deutsch*

*Français*

*Español*

EN  
DE  
FR  
ES

# SPECIAL NOTICES

❗ Yamaha makes no representations or warranties with regard to any problems while attempting to copy the disks or software and cannot be held responsible for the results of attempts to copy the data.

- The software included in the TOOLS for n Version2 CD-ROM and this Installation Guide are the exclusive copyrights of Yamaha Corporation.
- The software included in the Cubase AI 4 DVD-ROM and the copyrights thereof are under exclusive ownership by Steinberg Media Technologies GmbH.  
Note that Yamaha does not offer technical support for the DAW software in the DVD-ROM.
- Use of the software and this manual is governed by the license agreement which the purchaser fully agrees to upon breaking the seal of the software packaging. (Please read carefully the Software License Agreement on page 19 to 22 of this manual before installing the software.)
- Copying of the software or reproduction of this manual in whole or in part by any means is expressly forbidden without the written consent of the manufacturer.
- Yamaha makes no representations or warranties with regard to the use of the software and documentation and cannot be held responsible for the results of the use of this manual and the software.
- These disks are NOT for audio/visual purpose. Do not attempt to play the disks on a CD/DVD player. Doing so may result in irreparable damage to your audio CD/DVD player.
- The software included in the TOOLS for n Version2 CD-ROM may be revised and updated without prior notice. Make sure to check and download the latest version of the software from the following site.  
<http://www.yamahasyth.com/download/>
- For information about the minimum system requirements and latest information of Cubase AI 4, check the web site below.  
<http://www.yamahasyth.com/>
- Future upgrades of application and system software and any changes in specifications and functions will be announced separately.
- The screen displays as illustrated in this manual are for instructional purposes, and may appear somewhat different from the screens which appear on your computer.

Copying of the commercially available musical data including but not limited to MIDI data and/or audio data is strictly prohibited except for your personal use.

- Windows is the registered trademark of Microsoft® Corporation.
- Apple, Mac and Macintosh are trademarks of Apple Inc., registered in the U.S. and other countries.
- FireWire and the FireWire symbol are trademarks of Apple, Inc., registered in the U.S. and other countries. The FireWire logo is a trademark of Apple, Inc.



The company names and product names in this Installation Guide are the trademarks or registered trademarks of their respective companies.

# Table of Contents

About the Disks Included in the Package .....	3	Changing settings after installation.....	14
Operating System (OS) .....	3	Using multiple devices compatible with Yamaha	
CD/DVD-ROM Installation Procedure.....	3	Steinberg FW Driver .....	16
Disk Contents .....	4	Hints for using audio data (Windows).....	17
System Requirements for Software .....	4	Troubleshooting .....	17
About the Cubase AI 4 DVD-ROM .....	6	License Agreement for TOOLS for n Version2.....	19
Installation .....	6	License Agreement for Cubase AI 4.....	20
About the TOOLS for n Version2 CD-ROM.....	6		
Installation(Windows XP) .....	7		
Installation(Windows Vista).....	10		
Installation(Macintosh) .....	12		

## About the Disks Included in the Package

### Operating System (OS)

The software on these disks is for the Windows and Macintosh operating system. Refer to page 4 (for Windows) or page 5 (for Macintosh) to install the software.

### CD/DVD-ROM Installation Procedure

Before breaking the seal of the disk's packaging, please read carefully the "Software License Agreement for TOOLS for n Version2" and "Software License Agreement for Cubase AI 4" on page 20 to 22 of this guide.

- 1** Verify that your system meets the operating requirements of the software. ....page 4
- 2** Install Cubase AI 4. ....page 6
- 3** Install TOOLS for n Version2. ....page 6
- 4** Start up the software.

For subsequent operations, refer to the owner's manual for the n8/n12 and Cubase AI 4 (online help/PDF manual).

**NOTE** 

- To view PDF files, you must install Adobe Reader on your computer.  
If you do not have Adobe Reader, you can download the application from the Adobe website at the following URL:  
<http://www.adobe.com>

**Quick solutions/Reference materials**

- Changing the driver settings .....page 14
- Uninstalling or re-installing the driver
  - Windows XP: .....page 9
  - Windows Vista: .....page 11
  - Macintosh: .....page 13
- Resolving communication problems with the n8/n12  
Refer to the section "Troubleshooting" in the n8/n12 Owner's Manual.

## Disk Contents

The disks contain the following software and data.

### ● TOOLS for n Version2

Software Name	Contents
TOOLS for n Version2	TOOLS for n Version2 consists of two software components: Yamaha Steinberg FW Driver and n Extension. Yamaha Steinberg FW Driver enables audio/MIDI signals to be transferred between a computer and the n8/n12 via IEEE1394 cables. Up to three devices compatible with Yamaha Steinberg FW Driver can be used simultaneously. Keep in mind that up to two devices can be connected when the Sample Rate is set to 88.2 kHz or 96 kHz. Using n Extension, you can link the n8/n12 with Cubase versions such as Cubase 4.5 and Cubase AI 4.5 that support the Link functions between both of them. The TOOLS for n Version2 Installer installs these two software components.

### ● Cubase AI 4

Software Name	Contents
Cubase AI 4	<p>Cubase AI 4 is a special version developed for Yamaha products, based on Steinberg Cubase 4, which is very popular among a wide range of users.</p> <p>Cubase AI 4 features an Advanced Integration function that integrates various hardware devices, including the Yamaha n series, and provides an integrated operational environment.</p> <p>Cubase AI 4 also features the following content data that is carefully selected from the Yamaha MOTIF ES series, Yamaha's synthesizer flagship models:</p> <ul style="list-style-type: none"> <li>• MIDI Drum Style: Twenty project files of rhythm patterns that cover a wide range of genres, such as R&amp;B and rock (Windows) \Cubase AI 4 for Windows\Additional Content\Yamaha Content\Drum Styles (Macintosh) /Cubase AI 4 for MacOS X\Additional Content\Yamaha Content\Drum Styles</li> <li>• AUDIO LOOP: More than 480 audio loop files that contain ready-to-use rhythm loops (Windows) \Cubase AI 4 for Windows\Additional Content\Yamaha Content\Loops (Macintosh) /Cubase AI 4 for MacOS X\Additional Content\Yamaha Content\Loops</li> <li>• DEMO SONG: \Demo Project\Start Aeye.cpr</li> </ul>

English

## System Requirements for Software

The system requirements below are necessary for installing software included in the accessory disks (TOOLS for n Version2 and Cubase AI 4).

### NOTE

- Note that the system requirements may be slightly different from those described below depending on the particular operating system.
- For details on minimum requirements for other DAW software, refer to the respective owner's manual.

## ■ Windows

### TOOLS for n Version2

<b>OS</b>	Windows XP Professional SP2 or later/XP Home Edition SP2 or later/Vista (32 bit)
<b>Computer</b>	Core/Pentium/Celeron family CPU, with an S400 (400 Mbps) IEEE1394 (FireWire) or i.LINK terminal (*1).
<b>Hard Disk</b>	Free disk space of 100 MB or more; high-speed hard disk

#### Windows XP Professional SP2 or later/XP Home Edition SP2 or later

- Recommended system requirements (\*2)
 

CPU	: Core 2 Duo	1.66 GHz or more
Memory	: 512 MB or more	
- Minimum system requirements (\*2)
 

CPU	: Pentium 1.4 GHz or more, or Celeron	1.7 GHz or more
Memory	: 512 MB or more	

### Windows Vista (32bit)

- Recommended system requirements (\*2)
 

CPU	: Core 2 Duo	2.13 GHz or more
Memory	: 2 GB or more	
- Minimum system requirements (\*2)
 

CPU	: Pentium 2.0 GHz or more	
Memory	: 512 MB or more	

\*1 The computer must have an IEEE 1394 (FireWire or i.LINK, etc.) connector. If there is no connector, install an IEEE1394 interface card (PCI or PC). For details, refer to the following URL:  
<http://www.yamahasynth.com/>

\*2 The system requirements listed here apply when playing audio/MIDI data of the following specifications on the included Cubase AI 4 installed to a computer connected to an n8/n12. These may differ depending on the particular DAW you are using.

Recommended system requirements

- Frequency/resolution: 44.1 kHz/24 bit
- Audio playback tracks: 16
- Audio recording tracks: 1
- MIDI playback tracks: 18
- MIDI Remote Control/Automation
- Send effects (plug-in): 3
- Insert effects (plug-in): 9
- Plug-in synthesizer: 2
- Latency: about 6 msec

Minimum system requirements

- Frequency/resolution: 44.1 kHz/24 bit
- Audio playback tracks: 15
- MIDI Remote Control/Automation
- Send effects (plug-in): 3
- Insert effects (plug-in): 9
- Plug-in synthesizer: none
- Latency: about 50 msec

## Macintosh

### TOOLS for n Version2

- OS** Mac OS X 10.4.x (Mac OS X 10.4.9 or later for Intel-based Macintosh computer), Mac OS X 10.5.x
- Hard Disk** Free disk space of 50 MB or more; high-speed hard disk

- **Recommended system requirements (\*1)**
  - CPU : PowerPC G5 2.0 GHz Dual or higher, or Core Solo 1.5 GHz or more
  - Memory : 1 GB or more
- **Minimum system requirements (\*1)**
  - CPU : PowerPC G4 1 GHz or more
  - Memory : 512 MB or more

\*1 The system requirements listed here apply when playing audio/MIDI data of the following specifications on the included Cubase AI 4 installed to a computer connected to an n8/n12. These may differ depending on the particular DAW you are using.

Recommended system requirements

- Frequency/resolution: 44.1 kHz/24 bit
- Audio playback tracks: 16
- Audio recording tracks: 1
- MIDI playback tracks: 18
- MIDI Remote Control/Automation
- Send effects (plug-in): 3
- Insert effects (plug-in): 9
- Plug-in synthesizer: 2
- Latency: about 5 msec

Minimum system requirements

- Frequency/resolution: 44.1 kHz/24 bit
- Audio playback tracks: 15
- MIDI Remote Control/Automation
- Send effects (plug-in): 3
- Insert effects (plug-in): 9
- Plug-in synthesizer: none
- Latency: about 50 msec

**NOTE**

- When using a laptop or notebook computer, a built-in IEEE1394 terminal may not be available. If this is the case, install an appropriate PC interface card.

### Cubase AI 4.5

- OS:** Windows XP Professional/XP Home Edition/Vista (32 bit)
- CPU:** Pentium/Athlon 1.4 GHz or more
- Memory:** 512 MB or more
- Image resolution:** 1280 x 800 - full color
- Hard disk:** 1 GB or more

**IMPORTANT**

- A DVD drive is required for installation.
- In order to have continuous use of Cubase AI 4, including support and other benefits, you will need to register the software and activate your software license by starting it while the computer is connected to the Internet.

### Cubase AI 4.5

- OS:** Mac OS X 10.4.x, Mac OS X 10.5.x
- CPU:** PowerPC G4 1 GHz or Core Solo 1.5 GHz or more
- Memory:** 512 MB or more
- Image resolution:** 1280 x 800 - full color
- Hard disk:** 1 GB or more

**IMPORTANT**

- A DVD drive is required for installation.
- In order to have continuous use of Cubase AI 4, including support and other benefits, you will need to register the software and activate your software license by starting it while the computer is connected to the Internet.

# About the Cubase AI 4 DVD-ROM

## Installation

### NOTE

- If you have already installed a version of Cubase compatible with the Link function, such as Cubase 4.5, the instructions for “Installing Cubase AI 4” are not necessary. Jump to the next section “Installing TOOLS for n Version2.”

### IMPORTANT

- Before breaking the seal of the Cubase AI 4 DVD-ROM package, please read carefully the Steinberg Software End User License Agreement (EULA) on page 20 of this manual. By opening the disk package, you indicate your agreement with the use terms of the software and concurrence with the Software End User License Agreement.

- 1 Start the computer and log on to the Administrator account.**
- 2 Insert the Cubase AI 4 DVD-ROM into the DVD-ROM drive.**

- 3 For Windows, open the “Cubase AI 4 for Windows” folder and double-click on the “Cubase AI 4.msi” file. For Macintosh, open the “Cubase AI 4 for MacOS X” folder and double-click on the “Cubase AI 4.mpkg” file.**

Follow the on-screen instructions to install Cubase AI 4.

### NOTE

- In order to have continuous use of Cubase AI 4, including support and other benefits, you will need to register the software and to activate your software license by starting it while the computer is connected to the Internet. Click the “Register Now” button shown when the software is started, then fill in all required fields for registration. If you do not register the software, you will be unable to use it after a limited period of time expires.

## About the TOOLS for n Version2 CD-ROM

### CAUTION

- Keep in mind that noise may be generated when installing or uninstalling the TOOLS for n Version2. Before performing either of these operations, make sure to lower the output level of each device.

TOOLS for n Version2 consists of two software components: Yamaha Steinberg FW Driver and n Extension. Yamaha Steinberg FW Driver enables audio/MIDI signals to be transferred between a computer and the n8/n12 via IEEE1394 cables. Up to three devices compatible with Yamaha Steinberg FW Driver can be used simultaneously. Keep in mind that up to two devices can be connected when the Sample Rate is set to 88.2 kHz or 96 kHz. Using n Extension, you can link the n8/n12 with Cubase versions such as Cubase 4.5 and Cubase AI 4.5 that support the Link functions between both of them. The TOOLS for n Version2 Installer installs these two software components.

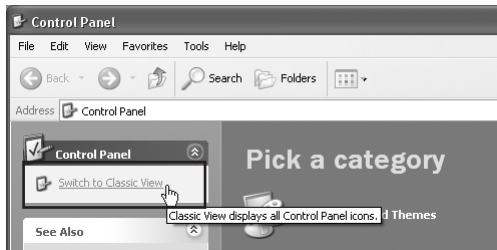
### If using mLAN Driver/mLAN Tools with Windows:

- If you are using mLAN Driver/mLAN Tools V1.6.2, update them to V1.6.3 (or higher) before installing TOOLS for n Version2. This is necessary because the Yamaha Steinberg FW Driver cannot work properly with the mLAN Driver/mLAN Tools V1.6.2 installed.
- When using Yamaha Steinberg FW Driver, make sure to disable the mLAN Driver. If this is enabled (on), Yamaha Steinberg FW Driver cannot work because the mLAN Driver uses the IEEE1394 interface.
- When using the mLAN Driver, make sure to turn off any devices compatible with Yamaha Steinberg FW Driver or disconnect them from the computer before enabling the mLAN driver.
- Note that you may not need to disable the mLAN driver when the computer is equipped with multiple IEEE1394 interfaces and a device compatible with Yamaha Steinberg FW driver is connected to the different IEEE1394 interface from the other used by the mLAN driver.

## Installation(Windows XP)

### Preparing to install

- 1 Make sure that the power to the n8/n12 is turned off.
- 2 Using an IEEE1394 cable, connect the n8/n12 directly to the computer (without using a hub), and disconnect all other IEEE1394 devices from the computer.
- 3 Start the computer and log on to the Administrator account.
- 4 Select [Start] (→ [Settings]) → [Control Panel]. If the control panel appears as shown below, click "Switch to Classic View" in the upper left of the window. All control panels and icons will be displayed.



- 5 Go to [System] → [Hardware] → [Driver Signing] → [Driver Signing Options], and select the radio button to the left of "Ignore - Install the software anyway and don't ask for my approval" and click [OK].



#### NOTE

- After completing the installation, make sure to restore the original setting if necessary.

- 6 Check that no "!" or "x" marks appear next to "IEEE1394 Bus host controllers" in ([System] → [Hardware] → [Device Manager]). If one of these marks is shown, the IEEE1394/i.LINK connection cannot be used. Refer to the owner's manual of your computer for details.
- 7 Close the Device Manager window, System Properties window and Control Panel by clicking the [OK] button or the Close button ([X]) of the windows.
- 8 Exit any open applications and close all open windows.
- 9 Insert the TOOLS for n Version2 CD-ROM into the CD-ROM drive.

### Software Installation

The installer will install the following two software components to your computer.

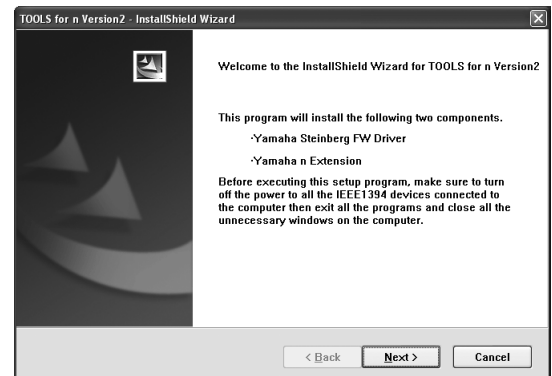
- Yamaha Steinberg FW Driver
- n Extension

#### NOTE

- Use the Cancel button or Close button to quit the installation. Quitting by using the [Ctrl]+[Alt]+[Delete] buttons or by turning off the power while installation is in process can result in problems since the installation is terminated without performing a proper uninstall.

- 10 Open the CD-ROM, then double-click the file "setup.exe."

A "Welcome to the InstallShield Wizard for TOOLS for n Version2" window appears.



- 11 Click [Next].

**12 Follow the on-screen instructions in the Setup window for Yamaha Steinberg FW Driver, n Extension appearing in order.**

**NOTE**

- If the same version of each software component has already been installed in your computer, the installation window of the corresponding software will not appear.
- If a message "The software you are installing has not passed Windows Logo Testing" appears, click [Continue Anyway]. You do not need to abort the installation. If the message does not appear, proceed to the next step.

**13 When installation is complete, a message indicating so appears. If restarting of the computer is necessary following successful completion of the installation, make sure that the radio button to the left of "Yes, I want to restart my computer now" is selected, then click [Finish] to restart the computer. If restarting the computer is unnecessary, click [Finish] to exit the installation process.**

**When canceling the installation:**

If you've cancelled an installation before it is complete, the software may not have been installed properly. To install the software properly, resume the procedure from Step 10.

**Initial settings of driver**

After you've installed TOOLS for n Version2, perform the initial settings of the driver.

**NOTE**

- A dialog box may appear asking you whether you wish to connect to Windows Update. In this case, select the radio button to the left of "Not at this time," then click [Next].

**Bus driver initial settings**

**14 The "Found New Hardware Wizard" window appears. Select the radio button next to "Install the software automatically [Recommended]," then click [Next].**



**15 When installation is complete, a message indicating so appears. Click [Finish].**

**NOTE**

- If multiple IEEE1394 interfaces have been installed to the computer, the wizard appears several times. Exit the wizard each time.

**Initial Settings of n series FW Driver**

**16 Connect the n8/n12 to the computer, then turn on the power to the n8/n12.**

The "Found New Hardware Wizard" window is displayed.

**17 Select the radio button next to "Install the software automatically [Recommended]," then click [Next].**

**18 When installation is complete, a message indicating so appears. Click [Finish].**

**WDM MIDI driver initial settings**

**19 The "Found New Hardware Wizard" window appears. Select the radio button next to "Install the software automatically [Recommended]," then click [Next].**

**20 When installation is complete, a message indicating so appears. Click [Finish].**

**WDM Audio driver initial settings**

**21 The "Found New Hardware Wizard" window appears. Select the radio button next to "Install the software automatically [Recommended]," then click [Next].**

**22 When installation is complete, a message indicating so appears. Click [Finish].**

The n8/n12 [COMP] indicator will flash sequentially, then will stop when the initial settings have been completed.

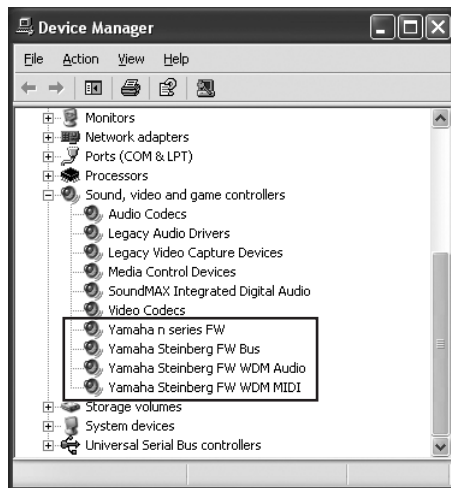
**NOTE**

- When a new IEEE1394 interface is installed to the computer or the other devices compatible with Yamaha Steinberg FW Driver is connected to the computer, the "Found New Hardware Wizard" window will appear. In that case, finish the wizard in the same way as described here.



## Confirming the installation

- 1 Select [Control Panel] from the Start menu.
- 2 Double-click on the System icon to call up the System Properties window.
- 3 Select the Hardware tab and click [Device Manager].
- 4 Click on the [+] mark next to “Sound, video and game controllers,” and confirm that “Yamaha n series FW,” “Yamaha Steinberg FW Bus,” “Yamaha Steinberg FW WDM Audio” and “Yamaha Steinberg FW WDM MIDI” are listed.



## Uninstalling the Software

To uninstall TOOLS for n Version2, you must remove the following two software components:

- Yamaha Steinberg FW Driver
- n Extension

- 1 Make sure the POWER switch on the n8/n12 is set to OFF, exit from any open applications and close all open windows.
- 2 From the Start menu, select ([Settings] →) [Control Panel] → [Add or Remove Programs] to display the Add or Remove Programs panel.
- 3 Click “Change or Remove Programs” located in the upper left, then select “Yamaha Steinberg FW Driver,” “Yamaha n Extension” from the list in the right panel.
- 4 To uninstall the software, click [Change or Remove] / [Remove].  
Follow the instructions to remove the software.

## Installation(Windows Vista)

### Preparing to install

- 1 **Make sure that the power to the n8/n12 is turned off.**
- 2 **Using an IEEE1394 cable, connect the n8/n12 directly to the computer (without using a hub), and disconnect all other IEEE1394 devices from the computer.**
- 3 **Start the computer and log on to the Administrator account.**
- 4 **Select [Start] → [Control Panel]. If the control panel appears as shown below, click “Switch to Classic View” in the upper left of the window.**  
All control panels and icons will be displayed.



- 5 **Double-click the Device Manager icon.**

**NOTE**

- If the “User Account Control” window appears, click [Continue]. A dialog box appears.

- 6 **Check that no “!” or “x” marks appear next to “IEEE1394 Bus host controllers.”**  
If one of these marks is shown, the IEEE1394/i.LINK connection cannot be used. Refer to the owner’s manual of your computer for details.
- 7 **Click the Close button ([x]) at the top right of the Device Manager window, then click the Close button ([x]) at the top right of the Control Panel window to close it.**
- 8 **Exit any open applications and close all open windows.**
- 9 **Insert the TOOLS for n Version2 CD-ROM into the CD-ROM drive of your computer.**

### Software Installation

The installer will install the following two software components to your computer.

- Yamaha Steinberg FW Driver
- n Extension

**NOTE**

- Use the Cancel button or Close button to quit the installation. Quitting by using the [Ctrl]+[Alt]+[Delete] buttons or by turning off the power while installation is in process can result in problems since the installation is terminated without performing a proper uninstall.

- 10 **Open the CD-ROM then double-click the file “setup.exe.”**

A “Welcome to the InstallShield Wizard for TOOLS for n Version2” window appears.



**NOTE**

- If the “User Account Control” window appears, click [Continue]. A dialog box appears.

- 11 **Click [Next].**

- 12 **Follow the on-screen instructions in the Setup window for Yamaha Steinberg FW Driver, n Extension appearing in order.**

**NOTE**

- If the same version of each software component has already been installed in your computer, the installation window of the corresponding software will not appear.
- If the “Windows Security” window appears, confirm that the publisher is “YAMAHA CORPORATION,” then click [Install].



- 13** When installation is complete, a message indicating so appears. If restarting of the computer is necessary following successful completion of the installation, make sure that the radio button to the left of “Yes, I want to restart my computer now” is selected, then click [Finish] to restart the computer. If restarting the computer is unnecessary, click [Finish] to exit the installation process.

#### When canceling the installation

If you've cancelled an installation before it is complete, the software may not have been installed properly. To install the software properly, resume the procedure from Step 10.

### Initial settings of driver

After you've installed TOOLS for n Version2, perform the initial settings of the driver.

#### NOTE

- If the “User Account Control” window appears, click [Continue].

- 14** Connect the n8/n12 to the computer, then turn on the power to the n8/n12.

The n8/n12 [COMP] indicator will flash sequentially, then will stop when the initial settings have been completed.

#### NOTE

- If the n8/n12 [COMP] indicator does not light even if you wait for a while, restart the computer.
- If the “User Account Control” window appears when you install a new IEEE1394 interface to the computer, click [Continue].

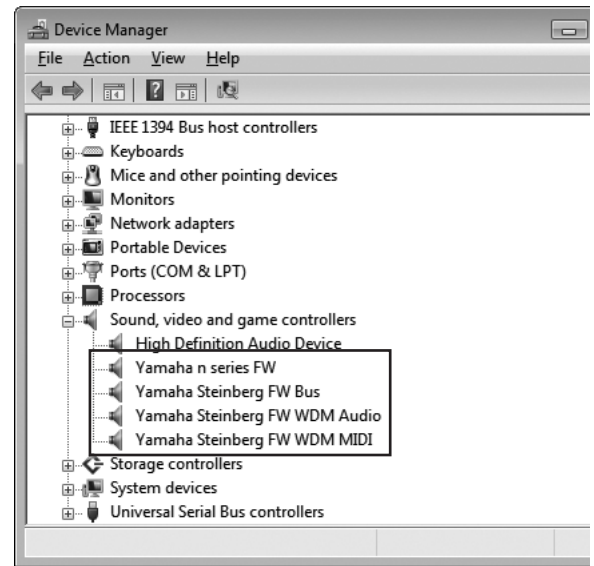
### Confirming the installation

- 1 Select [Control Panel] from the Start menu.
- 2 Double-click the Device Manager icon.

#### NOTE

- If the “User Account Control” window appears, click [Continue]. A dialog box appears.

- 3 Click on the [+] mark next to “Sound, Video and game controllers” and confirm that “Yamaha n series FW,” “Yamaha Steinberg FW Bus,” “Yamaha Steinberg FW WDM Audio” and “Yamaha Steinberg FW WDM MIDI” are listed.



### Uninstalling the Software

To uninstall TOOLS for n Version2, you must remove the following two software components:

- Yamaha Steinberg FW Driver
- n Extension

- 1 Make sure that the power to the n8/n12 is turned off. Exit any open applications and close all open windows.
- 2 From the Start menu, select [Control Panel] → [Programs and Features] to display the Uninstall or change a program panel.
- 3 Select “Yamaha Steinberg FW Driver,” “Yamaha n Extension” from the list.
- 4 To uninstall the software, click [Uninstall]/[Uninstall/Change].

If the “User Account Control” window appears, click [Continue]. A dialog box appears. Follow the instructions to remove the software.

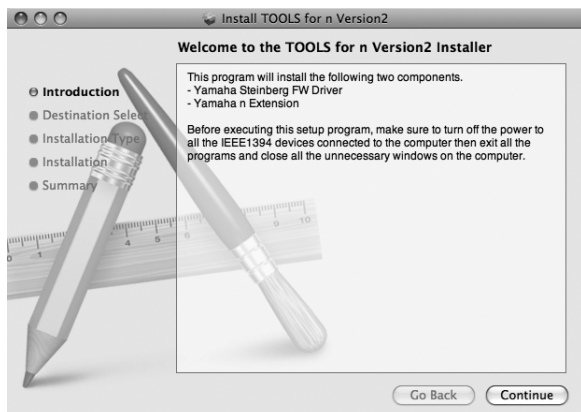
## Installation(Macintosh)

### Preparing to install

- 1 **Make sure that the power to the n8/n12 is turned off.**
- 2 **Using an IEEE1394 (Firewire) cable, connect the n8/n12 directly to the computer (without using a hub), and disconnect all other IEEE1394 devices from the computer.**
- 3 **Start the computer and log in to the Administrator account.**
- 4 **Exit any open applications and close all open windows.**
- 5 **Insert the TOOLS for n Version2 CD-ROM into the CD-ROM drive of your computer.**

### Software Installation

- 6 **Open the CD-ROM, then double-click the file "TOOLS for n V2.mpkg."**
- 7 **A dialog box appears asking if you want to install the software. Click [Continue].**  
The "Welcome to the TOOLS for n Version2 Installer" window appears.



- 8 **Click [Continue].**  
The "Select Destination" window appears.

#### NOTE

- Only the boot disk can be selected for the installer.
- If you are using Mac OS X 10.5 (Leopard), click [Continue] to call up the "Installation Type" window.

- 9 **Click [Continue].**  
The "Installation Type" window appears.

- 10 **Click [Install].**  
The "Authenticate" window appears.

#### NOTE

- If an older version of the Yamaha Steinberg FW Driver has already been installed in your computer, [Update] may appear instead of [Install].

- 11 **Enter the Administrator name and the password, then click [OK].**  
A message appears prompting you to restart the computer after the installation.

- 12 **Click [Continue Installation].**  
The "Install" window appears indicating the installation progress. When the installation is complete, the "Finish Up" window appears.

#### NOTE

- Installation cannot be canceled after clicking [Continue Installation].

- 13 **Click [Restart] to restart the computer.**

- 14 **Connect the n8/n12 to the computer, then turn on the power to the n8/n12.**  
The n8/n12 [COMP] indicator will flash sequentially, and then will stop when the initial settings have been completed.

#### NOTE

- If the n8/n12 [COMP] indicator does not light even if you wait for a while, restart the computer.

#### When canceling the installation

If you've cancelled an installation before it is complete, the software may not have been installed properly. To install the software properly, resume the procedure from Step 6.

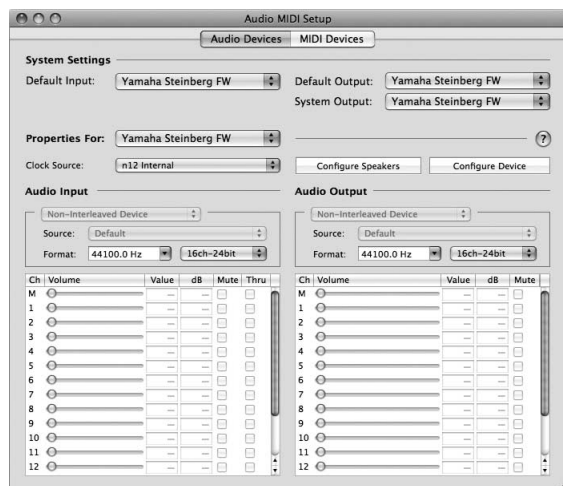
### Confirming the installation

#### Audio MIDI Setup (Audio Devices)

- 1 **From the hard disk to which the OS is installed (usually Macintosh HD), click [Applications] → [Utilities], then double-click [Audio MIDI Setup].**  
The "Audio MIDI Setup" window appears.
- 2 **Click [Audio Devices], then select "Yamaha Steinberg FW" from the pull-down menu in [Properties For].**  
The current audio settings are shown in the [Audio Input] and [Audio Output] fields.

#### NOTE

- By selecting "Yamaha Steinberg FW" for [Default Output] in System Settings, you can output audio signals of the system sounds and audio player software (e.g., iTunes, etc.) from the n8/n12.



## Uninstalling the Software

To uninstall TOOLS for n Version2, you must remove the following two software components:

- Yamaha Steinberg FW Driver
- n Extension

### Removing Yamaha Steinberg FW Driver

Remove the following folders and files from the boot disk (usually Macintosh HD).

```

/Applications/Yamaha/FWDriver/
  Yamaha Steinberg FW Control Panel.app
  YamahaFWCM.app
/Library/Application Support/Yamaha/FWDriver/HAL/
  YamahaFWHAL.bundle
/Library/Audio/MIDI Devices/Yamaha/Images/
  FW_10000D.tiff
  FW_10000E.tiff
  FW_110006.tiff
  FW_110007.tiff
  FW_110008.tiff
  FW_110009.tiff
/Library/Audio/MIDI Drivers/
  YamahaFWMIDI.plugin
/Library/LaunchAgents/
  com.yamaha.YamahaFWCM.plist
/Library/PreferencePanes/
  Yamaha Steinberg FW.prefPane
/Library/Preferences/
  com.yamaha.FWDriver.plist
/Library/Receipts/
  YamahaFWAudioDriver.pkg
  YamahaFWCM.pkg
  YamahaFWCP.pkg
  YamahaFWDriverplist.pkg
  YamahaFWEnabler.pkg
  YamahaFWHAL.pkg
  YamahaFWMIDIIcon.pkg
  YamahaFWMIDIPlugIn.pkg
/System/Library/Extensions/
  YamahaFWAudioDriver.kext
/System/Library/Frameworks/
  YamahaFWEnabler.framework

```

```

/User/{Account name}/Library/Preference/
  com.yamaha.YamahaFWCM.plist

```

\* “[Account name]” indicates the account name when Yamaha Steinberg FW Driver is installed.

### Removing n Extension

Remove the following folders and files from the boot disk (usually Macintosh HD).

```

/Library/Application Support/Steinberg/Components/
  yamaha_n.bundle
  yamaha_n_u.bundle

/Library/Application Support/Steinberg/Project Template/
  Yamaha n8 multi channel recording.cpr
  Yamaha n8 stereo channel recording.cpr
  Yamaha n12 multi channel recording (5.1).cpr
  Yamaha n12 multi channel recording.cpr
  Yamaha n12 stereo channel recording (5.1).cpr
  Yamaha n12 stereo channel recording.cpr

```

This completes the uninstallation of TOOLS for n Version2.

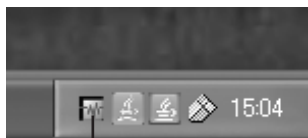
# Changing settings after installation

This Control Panel window lets you set basic n8/n12 parameters when using Yamaha Steinberg FW Driver. The Control Panel consists of the General window, n8/n12 window and About window which lets you set the parameters such as sampling rate and WORD CLOCK Source. The settings here are immediately applied to the n8/n12.

## How to call up the Control Panel window

### Windows:

- From the Device filed on the Device Setup window (called up via [Device] → [Device Setup...]) of Cubase, select “Yamaha Steinberg FW ASIO” then select “Control Panel.”
- Double-click the driver icon indicated on the Taskbar Notification area, or right-click the icon, then select “Control Panel.”



Driver icon

- Select [Start] → [Control Panel] → [Yamaha Steinberg FW Driver].

### Macintosh:

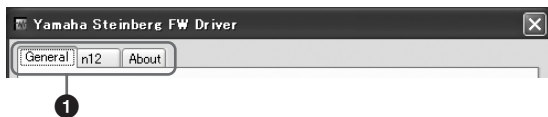
- From the Device filed on the Device Setup window (called up via [Device] → [Device Setup...]) of Cubase, select “Yamaha Steinberg FW” then select “Control Panel.”
- Select [System Preference...] → [Yamaha Steinberg FW]
- Select the Application folder → Utility folder → Audio MIDI Setup → Set “Properties” to “Yamaha Steinberg FW”, then click [Configure Device]

### NOTE

- The explanations below use Windows are an example, but the basic operation is the same for both Windows and Macintosh.

## Parameter functions

### Overall



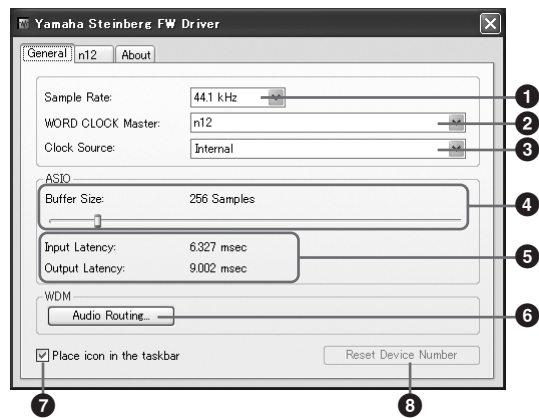
#### 1 Tab

Calls up the corresponding window. To close the Control Panel window, click the “X” at the top right corner of the window on Windows, or click the “X” at the top left corner of the window on Macintosh.

### NOTE

- When two or three devices compatible with Yamaha Steinberg FW Driver are connected in daisy-chain fashion, the corresponding tabs are indicated for each device. When the same two or three devices are connected, the corresponding tabs are indicated with numbers assigned to each device. For details, refer to page 16.

### General window



#### 1 Sample Rate

Specifies the sample rate of the n8/n12 from 44.1 kHz, 48 kHz, 88.2 kHz and 96 kHz.

#### 2 WORD CLOCK Master

Selects the master device of the Word Clock. This parameter is available only when two or three devices compatible with Yamaha Steinberg FW Driver are connected in daisy-chain fashion.

#### 3 Clock Source

Selects the word clock source of the device selected in the WORD CLOCK Master. For the n8/n12, only “Internal” can be selected.



**4 ASIO Buffer Size (Windows only)**

Determines the buffer size for the ASIO driver.

**5 Input Latency/Output Latency (Windows only)**

Indicates the delay time for the audio input/output in millisecond units. Audio latency differs depending on the value of the ASIO Buffer Size. The lower the value of the ASIO Buffer Size, the lower the value of Audio Latency.

**6 Audio Routing (Windows only)**

Click this to call up the WDM Audio Routing window. From this window, you can determine the input/output jack used for the WDM Audio driver. In each section, the upper box selects the device (only when two or three devices compatible with Yamaha Steinberg FW Driver are connected in daisy-chain fashion) and the lower box selects the input or output jacks.

**NOTE**

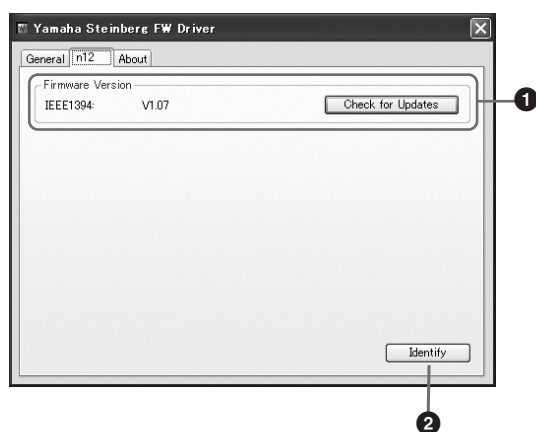
- The device name of the WDM Audio driver is "Yamaha Steinberg FW WDM Audio." This parameter specifies which jacks accept the input signals sent to a computer and to which jacks the output signals from the computer are sent. The input channels are stereo channels. The output channels are six consecutive channels from the stereo channels set in the output port setting.
- When using the Surround Monitoring, set "Monitor L/R" for the output port setting.

**7 Place Icon In the taskbar (Windows only)**

When this checkmark is entered, the driver icon is indicated on the Taskbar Notification area.

**8 Reset Device Number**

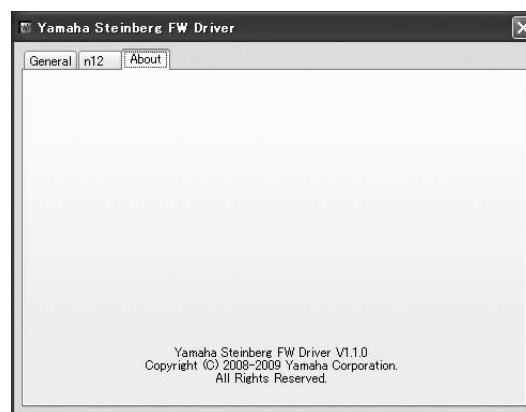
Clicking this resets the indication order of the devices on the DAW software. For details, refer to page 16. This operation is only effective when two or more devices compatible with Yamaha Steinberg FW Driver are connected in daisy-chain fashion.

**n8/n12 window****1 Firmware Version**

Indicates the firmware version of the IEEE1394. Clicking [Check for Updates] will call up the website from which you can download the latest firmware program.

**2 Identify**

Clicking this will cause the CUBASE READY indicator on the currently controlled n8/n12 to flash. This operation lets you confirm which device is actually controlled from a computer when two or more devices are daisy-chain connected.

**About window**

This window indicates the version of the Yamaha Steinberg FW Driver.

**Word Clock**

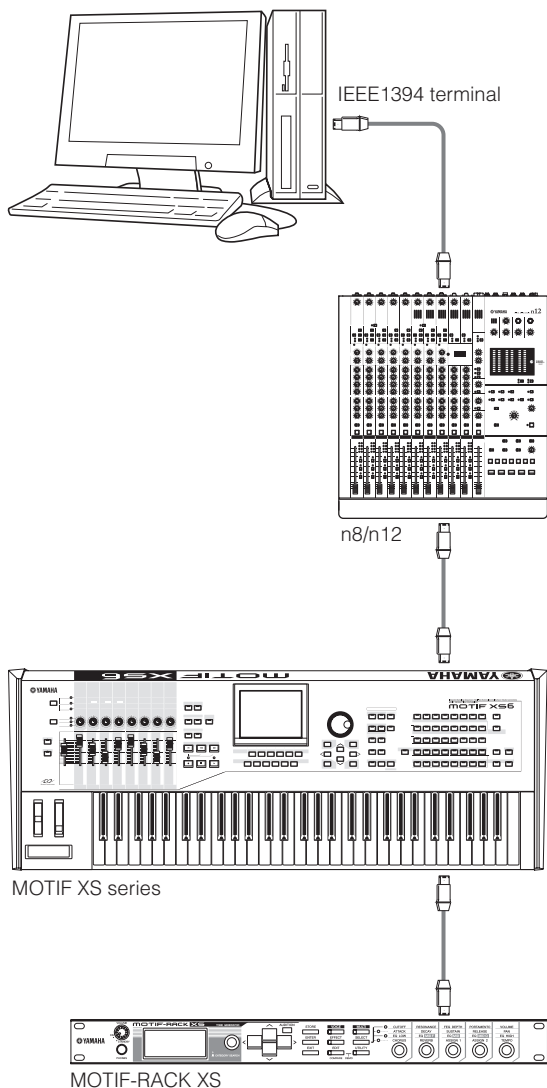
In a typical digital audio system, the signal referred to as "word clock" is used to synchronize the process timing of audio signals between multiple devices. If the word clock is not transferred correctly, click noise may occur or recording may not be successful. Normally, one device transmits a reference word clock signal, and the other devices receive this word clock signal and synchronize to it. The transmitting device is called the "word clock master" and the receiving devices are called "word clock slaves". Some devices compatible with Yamaha Steinberg FW Driver can function as the word clock slave. Select the word clock source of the word clock signal in the Clock Source parameter.

**Setting the audio driver buffer size**

Noise produced when using applications such as DAW software can affect audio recording and/or playback. In most cases, you can solve these problems by adjusting the audio buffer size (Audio Buffer Size). The buffer size can usually be adjusted via the audio driver setup window in the application. (When using ASIO compatible software for Windows, the buffer size can be adjusted in the ASIO Buffer Size parameter via the Control Panel of the Yamaha Steinberg FW Driver.) While the higher buffer size reduces load to the computer CPU but produces latency (time lag) during recording/playback, the smaller buffer size may result in noise or the sound cutting off. Make sure to set the buffer size to an appropriate value depending on the performance of your computer, the number of audio/MIDI tracks being recorded/played back on the DAW software, the number of plug-in software, and so on.

# Using multiple devices compatible with Yamaha Steinberg FW Driver

Up to three devices compatible with Yamaha Steinberg FW Driver can be used simultaneously. By connecting them in daisy-chain fashion to a computer via IEEE1394 cables, you can upgrade your music production system simply by adding other devices.

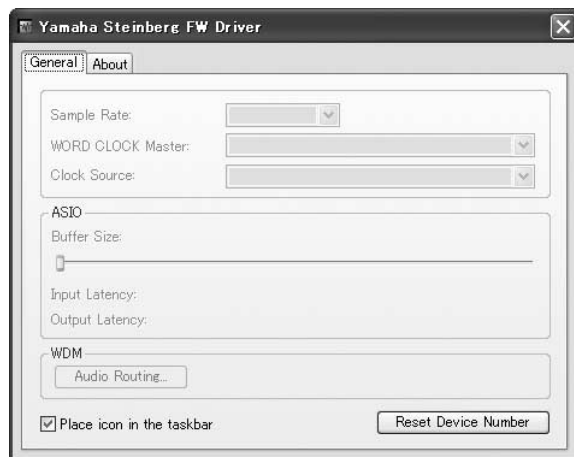


## NOTE

- Keep in mind that up to two devices can be connected when the Sample Rate is set to 88.2 kHz or 96 kHz. Even if you connect an additional third device, the last recognized device (other than the device specified as the Word Clock master) connected to the computer will not be available.
- Even if multiple IEEE1394 interfaces are installed on the computer, make sure to daisy-chain connect all devices to the jacks of a single interface. This is necessary since the computer can only recognize devices connected to a specific, single IEEE1394 interface jack, and cannot recognize devices connected to different jacks of different IEEE1394 interfaces even though they are installed on the same computer.

When connecting two or three devices compatible with Yamaha Steinberg FW Driver to a computer, the order of devices displayed in the DAW (Cubase etc.) will be maintained even if the power is turned off. The order of devices will be reproduced when turning on the power of the connected devices. When the same two or three devices are connected, a unique number (indicated at the end of the device name) is automatically assigned to each of the devices, in the order with which the devices are connected. The number once assigned to a device will be maintained even if it is disconnected or the power is turned off. If you want to reset the order of devices displayed in DAW or the number assignment, follow the instructions below.

- 1 Turn off the power of all the connected devices compatible with Yamaha Steinberg FW Driver then disconnect all the IEEE1394 cables.**
- 2 Call up the Control Panel of the Yamaha FW Driver window then click the [General] tab.**



- 3 Click the [Reset Device Number] button at the bottom right corner of this window.**

## NOTE

- The [Reset Device Number] button is available only when all the connected devices are turned off. When any device is turned on, this button is dimmed and cannot be clicked.

- 4 Daisy-chain connect two or three devices compatible with Yamaha Steinberg FW Driver to the computer in the desired order.**

- 5 Turn on the power of the first device connected directly to the computer.**

Wait until the tab corresponding to the first device appears on the Control Panel of the Yamaha FW Driver window, indicating that the computer has actually recognized the first device.

- 6 Turn on the power of the second device that is daisy-chain connected to the first device.**

The tab corresponding to the second device appears on the Control Panel of the Yamaha FW Driver window, indicating that the computer has recognized the second device. If a third device has been connected to this second device, turn the power on in the same manner. As necessary, set the Word Clock Master to the desired device.



## Hints for using audio data (Windows)

For optimum use of the audio functions, we recommend you make the following settings. These settings minimize possible audio problems, such as drop outs, glitches and noise.

### ● Set the DMA mode (high-speed transfer mode) of the hard disk to on

#### Windows Vista

Select [Control Panel] → [Device Manager] (→ [Continue] in the “User Account Control” window) → “IDE ATA/ATAPI controllers”, then double-click “ATA Channel 0” and open [Advanced Settings]. Check (enable) “Enable DMA” in the “Device Properties” section.

#### Windows XP

Select [Control Panel] → [System] → [Hardware] → [Device Manager] → “IDE ATA/ATAPI controllers”, then double-click “Primary IDE Channel” and “Secondary IDE Channel”, open [Advanced Settings]. Set “Transfer Mode” in the “Device” section to “DMA if available.”

### ● Set Processor Scheduling to “Background services”

#### Windows Vista

Select [Control Panel] → [System] → [Advanced system settings] in the upper left of the window (→ [Continue] in the “User Account Control” window) → [Advanced] → [Settings] in the “Performance” section → [Advanced] and select the radio button to the left of “Background services” in the “Processor scheduling” section.

#### Windows XP

Select [Control Panel] → [System] → [Advanced] → [Settings] in the “Performance” section → [Advanced] and select the radio button to the left of “Background services” in the “Processor scheduling” section.

### ● Set the Visual Effects options to “best performance”

#### Windows Vista

Select [Control Panel] → [System] → [Advanced system settings] in the upper left of the window (→ [Continue] in the “User Account Control” window) → [Advanced] → [Settings] in the “Performance” section → [Visual Effects] and select the radio button to the left of “Adjust for best performance.”

#### Windows XP

Select [Control Panel] → [System] → [Advanced] → [Settings] in the “Performance” section → [Visual Effects] and select the radio button to the left of “Adjust for best performance.”

### ● Set Remote Assistance to off

#### Windows Vista

Select [Control Panel] → [System] → [Remote settings] in the upper left of the window (→ [Continue] in the “User Account Control” window) → [Remote] and uncheck “Allow Remote Assistance connections...”

#### Windows XP

Select [Control Panel] → [System] → [Remote] and uncheck “Allow Remote Assistance invitations...”

### ● Enable the Classic Start menu

Right-click on an empty space on the task bar and select [Properties] → [Start Menu], then select the radio button to the left of “Classic Start menu.”

### ● Disable transition effects

#### Windows Vista

Select [Control Panel] → [Ease of Access Center] → “Make it easier to focus on tasks”, then check (enable) “Turn off all unnecessary animations (when possible)” in the “Adjust time limits and flashing visuals” section.

#### Windows XP

Select [Control Panel] → [Display] → [Appearance] → [Effects...], and un-check (disable) “Use the following transition effect for menus and tooltips.”

### ● Disable SpeedStep™

Refer to “Troubleshooting” in the n8/n12 Owner’s Manual.

### ● Disconnect your computer from the Internet

Select [Control Panel] → [Network and Sharing Center]/[Manage network connections] and right-click “Disable.”

## Troubleshooting

### ■ If an error message appears

Refer to “Error Messages” in the n8/n12 Owner’s Manual.

### ■ No sound, incorrect sound

Refer to “Troubleshooting” in the n8/n12 Owner’s Manual.

## Information for Users on Collection and Disposal of Old Equipment



This symbol on the products, packaging, and/or accompanying documents means that used electrical and electronic products should not be mixed with general household waste.

For proper treatment, recovery and recycling of old products, please take them to applicable collection points, in accordance with your national legislation and the Directives 2002/96/EC.

By disposing of these products correctly, you will help to save valuable resources and prevent any potential negative effects on human health and the environment which could otherwise arise from inappropriate waste handling.

For more information about collection and recycling of old products, please contact your local municipality, your waste disposal service or the point of sale where you purchased the items.

### **[For business users in the European Union]**

If you wish to discard electrical and electronic equipment, please contact your dealer or supplier for further information.

### **[Information on Disposal in other Countries outside the European Union]**

This symbol is only valid in the European Union. If you wish to discard these items, please contact your local authorities or dealer and ask for the correct method of disposal.

# License Agreement for TOOLS for n Version2

## ATTENTION SOFTWARE LICENSE AGREEMENT

PLEASE READ THIS SOFTWARE LICENSE AGREEMENT ("AGREEMENT") CAREFULLY BEFORE USING THIS SOFTWARE. YOU ARE ONLY PERMITTED TO USE THIS SOFTWARE PURSUANT TO THE TERMS AND CONDITIONS OF THIS AGREEMENT. THIS AGREEMENT IS BETWEEN YOU (AS AN INDIVIDUAL OR LEGAL ENTITY) AND YAMAHA CORPORATION ("YAMAHA").

BY DOWNLOADING, INSTALLING, COPYING, OR OTHERWISE USING THIS SOFTWARE YOU ARE AGREEING TO BE BOUND BY THE TERMS OF THIS LICENSE. IF YOU DO NOT AGREE WITH THE TERMS, DO NOT DOWNLOAD, INSTALL, COPY, OR OTHERWISE USE THIS SOFTWARE. IF YOU HAVE DOWNLOADED OR INSTALLED THE SOFTWARE AND DO NOT AGREE TO THE TERMS, PROMPTLY DELETE THE SOFTWARE.

### 1. GRANT OF LICENSE AND COPYRIGHT

Yamaha hereby grants you the right to use one copy of the software program(s) and data ("SOFTWARE") accompanying this Agreement. The term SOFTWARE shall encompass any updates to the accompanying software and data. The SOFTWARE is owned by Yamaha and/or Yamaha's licensor(s), and is protected by relevant copyright laws and all applicable treaty provisions. While you are entitled to claim ownership of the data created with the use of SOFTWARE, the SOFTWARE will continue to be protected under relevant copyrights.

- You may use the SOFTWARE on a single computer.
- You may make one copy of the SOFTWARE in machine-readable form for backup purposes only, if the SOFTWARE is on media where such backup copy is permitted. On the backup copy, you must reproduce Yamaha's copyright notice and any other proprietary legends that were on the original copy of the SOFTWARE.
- You may permanently transfer to a third party all your rights in the SOFTWARE, provided that you do not retain any copies and the recipient reads and agrees to the terms of this Agreement.

### 2. RESTRICTIONS

- You may not engage in reverse engineering, disassembly, decompilation or otherwise deriving a source code form of the SOFTWARE by any method whatsoever.
- You may not reproduce, modify, change, rent, lease, or distribute the SOFTWARE in whole or in part, or create derivative works of the SOFTWARE.
- You may not electronically transmit the SOFTWARE from one computer to another or share the SOFTWARE in a network with other computers.
- You may not use the SOFTWARE to distribute illegal data or data that violates public policy.
- You may not initiate services based on the use of the SOFTWARE without permission by Yamaha Corporation.  
Copyrighted data, including but not limited to MIDI data for songs, obtained by means of the SOFTWARE, are subject to the following restrictions which you must observe.
- Data received by means of the SOFTWARE may not be used for any commercial purposes without permission of the copyright owner.
- Data received by means of the SOFTWARE may not be duplicated, transferred, or distributed, or played back or performed for listeners in public without permission of the copyright owner.
- The encryption of data received by means of the SOFTWARE may not be removed nor may the electronic watermark be modified without permission of the copyright owner.

### 3. TERMINATION

This Agreement becomes effective on the day that you receive the SOFTWARE and remains effective until terminated. If any copyright law or provisions of this Agreement is violated, the Agreement shall terminate automatically and immediately without notice from Yamaha. Upon such termination, you must immediately destroy the licensed SOFTWARE, any accompanying written documents and all copies thereof.

### 4. DISCLAIMER OF WARRANTY ON SOFTWARE

You expressly acknowledge and agree that use of the SOFTWARE is at your sole risk. The SOFTWARE and related documentation are provided "AS IS" and without warranty of any kind. NOTWITHSTANDING ANY OTHER PROVISION OF THIS AGREEMENT, YAMAHA EXPRESSLY DISCLAIMS ALL WARRANTIES AS TO THE SOFTWARE, EXPRESS, AND IMPLIED, INCLUDING BUT NOT LIMITED TO THE IMPLIED WARRANTIES OF MERCHANTABILITY, FITNESS FOR A PARTICULAR PURPOSE AND NON-INFRINGEMENT OF THIRD PARTY RIGHTS. SPECIFICALLY, BUT WITHOUT LIMITING THE FOREGOING, YAMAHA DOES NOT WARRANT THAT THE SOFTWARE WILL MEET YOUR REQUIREMENTS, THAT THE OPERATION OF THE SOFTWARE WILL BE UNINTERRUPTED OR ERROR-FREE, OR THAT DEFECTS IN THE SOFTWARE WILL BE CORRECTED.

### 5. LIMITATION OF LIABILITY

YAMAHA'S ENTIRE OBLIGATION HEREUNDER SHALL BE TO PERMIT USE OF THE SOFTWARE UNDER THE TERMS HEREOF. IN NO EVENT SHALL YAMAHA BE LIABLE TO YOU OR ANY OTHER PERSON FOR ANY DAMAGES, INCLUDING, WITHOUT LIMITATION, ANY DIRECT, INDIRECT, INCIDENTAL OR CONSEQUENTIAL DAMAGES, EXPENSES, LOST PROFITS, LOST DATA OR OTHER DAMAGES ARISING OUT OF THE USE, MISUSE OR INABILITY TO USE THE SOFTWARE, EVEN IF YAMAHA OR AN AUTHORIZED DEALER HAS BEEN ADVISED OF THE POSSIBILITY OF SUCH DAMAGES. In no event shall Yamaha's total liability to you for all damages, losses and causes of action (whether in contract, tort or otherwise) exceed the amount paid for the SOFTWARE.

### 6. THIRD PARTY SOFTWARE

Third party software and data ("THIRD PARTY SOFTWARE") may be attached to the SOFTWARE. If, in the written materials or the electronic data accompanying the Software, Yamaha identifies any software and data as THIRD PARTY SOFTWARE, you acknowledge and agree that you must abide by the provisions of any Agreement provided with the THIRD PARTY SOFTWARE and that the party providing the THIRD PARTY SOFTWARE is responsible for any warranty or liability related to or arising from the THIRD PARTY SOFTWARE. Yamaha is not responsible in any way for the THIRD PARTY SOFTWARE or your use thereof.

- Yamaha provides no express warranties as to the THIRD PARTY SOFTWARE. IN ADDITION, YAMAHA EXPRESSLY DISCLAIMS ALL IMPLIED WARRANTIES, INCLUDING BUT NOT LIMITED TO THE IMPLIED WARRANTIES OF MERCHANTABILITY AND FITNESS FOR A PARTICULAR PURPOSE, as to the THIRD PARTY SOFTWARE.
- Yamaha shall not provide you with any service or maintenance as to the THIRD PARTY SOFTWARE.
- Yamaha is not liable to you or any other person for any damages, including, without limitation, any direct, indirect, incidental or consequential damages, expenses, lost profits, lost data or other damages arising out of the use, misuse or inability to use the THIRD PARTY SOFTWARE.

### 7. GENERAL

This Agreement shall be interpreted according to and governed by Japanese law without reference to principles of conflict of laws. Any dispute or procedure shall be heard before the Tokyo District Court in Japan. If for any reason a court of competent jurisdiction finds any portion of this Agreement to be unenforceable, the remainder of this Agreement shall continue in full force and effect.

### 8. COMPLETE AGREEMENT

This Agreement constitutes the entire agreement between the parties with respect to use of the SOFTWARE and any accompanying written materials and supersedes all prior or contemporaneous understandings or agreements, written or oral, regarding the subject matter of this Agreement. No amendment or revision of this Agreement will be binding unless in writing and signed by a fully authorized representative of Yamaha.

# License Agreement for Cubase AI 4

## Steinberg Software End User License Agreement (EULA)

### General

All intellectual property rights in the software belong to Steinberg Media Technologies GmbH (hereinafter: "Steinberg") and its suppliers. Steinberg permits you only to copy, download, install and use the software in accordance with the terms and conditions of this Agreement. **The product may contain product activation for protection against unlawful copying which permits a permanent use of the software only after the activation process has been totally completed.** The software can be used only together with the Steinberg key (dongle) and/or the Soft-eLicenser; the OEM software can be used only following registration and Trial Version Software can be used only for a running time of 30 days. You are only entitled to support and the right to upgrades or updates following a personal product registration; however, not for Trial Version Software. Internet access is required for the activation process.

The terms and conditions for use of Steinberg software / hardware by you, the end user (hereinafter termed "Licensee") appear below. By installing the software on your computer you agree to these terms and conditions. Please read the following text carefully in its entirety. If you do not approve these terms and conditions, you must not install this software.

In this event give back the product back to where you have purchased it (inc. all written material, the complete undamaged packing as well as the enclosed hardware) immediately but at the latest within 14 days in return for a refund of the purchase price.

### 1. Definitions

- 1.1. „Software“ includes (i) software files and other computer information of Steinberg and third parties, (ii) demo songs and audio and video files contained therein, (iii) written documentation (manual) belonging thereto and (iv) all modified versions and copies, which are provided by Steinberg in the form of updates, upgrades, patches and enhancements of Steinberg provided that these are not regulated by another agreement.
- 1.2. The software and all authorized copies of this software which you make are the intellectual property of Steinberg Media Technologies GmbH (hereinafter: "Steinberg") and their suppliers. The structure, organization and code of the software constitute valuable trade secrets of Steinberg and their suppliers. The software is legally protected in particular by the copyright law of the Federal Republic of Germany and other countries as well as by international treaties.

### 2. Grant of License

- 2.1. Steinberg grants you a non-exclusive license for the use of the software according to the terms and conditions of this Agreement. You may not lease, loan or sublicense the software.
- 2.2. The samples of so-called Loops and MIDI data remain the property of the respective rights holder (Big Fish Audio Inc., Yamaha Corporation and other licensors) and are licensed by Steinberg to you only for use in the creation of a live or recorded performance that includes the licensed samples as part of a derivative musical work created by the licensed end user. This license includes the use of the samples and MIDI data, the modification of the samples or MIDI data and the marketing of the derivative musical work without infringing any rights of copyright collecting societies and/or the owners of copyrights in any samples and MIDI data. The samples or MIDI data may not be included, whether unmodified or as part of a derivative work, in any sample or MIDI data library product.
- 2.3. If the software is protected by the Steinberg key alone, you may install a license for the software on one or at most 3 computers which are in your possession. The software may be used only on one of the computers at the same time by using the Steinberg key. If the software (i) is protected by the Soft eLicenser (alone or together with the Steinberg key) or (ii) has been sold to the first end user together with other software and/or hardware (hereinafter: "OEM software") or (iii) the software can be used only for a running time of 30 days (hereinafter: "Trial Version Software"), you may install and use a license for the software only on one computer which is in your possession.
- 2.4. The use of the software within a network is illegal where there is the possibility of a contemporaneous multiple use of the program.
- 2.5. You are entitled to prepare a backup copy of the software which will not be used for purposes other than storage purposes.
- 2.6. You shall have no further right or interest to use the software other than the limited rights as specified in this Agreement. Steinberg and their suppliers reserve all rights not expressly granted.
- 2.7. For Steinberg products including Fraunhofer mp3 coding technology, the following reference from Thomson Licensing S.A. is effective: Supply of this product does not convey a license nor imply any right to distribute content created with this product in revenue-generating broadcast systems (terrestrial, satellite, cable and/or other distribution channels),

streaming applications (via Internet, intranets and/or other networks), other content distribution systems (pay-audio or audio-on-demand applications and the like) or on physical media (compact discs, digital versatile discs, semiconductor chips, hard drives, memory cards and the like). An independent license for such use is required.  
For details please visit <http://mp3licensing.com>

### 3. Activation of the Software

- 3.1. Steinberg may use a compulsory activation of the software and a compulsory product registration of the OEM software for license control to protect the software against unlawful copying. If you do not accept the terms and conditions of this Agreement, the software will not work.
- 3.2. In such a case the product including the software may only be returned within 14 days following acquisition of the product. Upon return a claim according to § 11 shall not apply.

### 4. Support, Upgrades and Updates after Product Registration

- 4.1. You can only receive support, upgrades and updates following the personal product registration. Support is provided only for the current version and for the previous version during one year after publication of the new version. Steinberg can modify and partly or completely adjust the extent of the support (hotline, fora on the website etc.), upgrades and updates at any time. In case of Trial Version Software, there exists no product registration or any support, upgrades or updates.
- 4.2. The product registration is possible during the activation process or at any time later through the Internet. In such a process you are asked to agree to the storage and use of your personal data (name, address, contact, email-address, date of birth and license data) for the purposes specified above. Steinberg may also forward these data to engaged third parties, in particular distributors, for support purposes and for the verification of the upgrade or update right.
- 4.3. If you provide an address outside the EU, the data also can be transferred to third parties in countries which do not ensure an adequate level of data protection comparable to that applying within the EU.

### 5. Licence module (Steinberg key and/or Soft eLicenser)

- 5.1. Steinberg uses a hardware device connected through the USB connection of a computer (hereinafter "Steinberg key") and/or a protection scheme (hereinafter "Soft eLicenser") for license control (hardware and/or software dongle) in the case of many products. The Steinberg key and/or Soft eLicenser permanently saves the license information and regulates access to the software. If a Steinberg key is required for the use of the software, then the Steinberg key must be connected physically to the computer through the USB interface.
- 5.2. For the activation of the software, updates or upgrades of the software the computer which is connected to the Steinberg key and/or using the Soft eLicenser or using the OEM software must be connected to the server of SIA Syncrosoft through the Internet. If the product was delivered with the Steinberg key, the license information was already transferred to the Steinberg key. If the product was delivered with a product card (without the Steinberg key), the activation codes of the enclosed product card must be entered manually by the user upon installation and the license information must be exchanged with the server of SIA Syncrosoft.

- 5.3. In the event of OEM software, the activation codes will be send to an email-address submitted by you during a registration. Further, the activation codes must be entered manually by the user upon installation and the license information must be exchanged with the server of SIA Syncrosoft.
- 5.4. The reinstallation of the software - on the same or another computer - is permitted only in case the already installed software cannot be used any more (e.g. following deinstallation). If the software does not use a Steinberg key, but requires activation codes, the new activation codes may be obtained from the user's online account for support created during the personal product registration. Further, the activation codes must be entered manually by the user upon installation and the license information must be exchanged with the server of SIA Syncrosoft. Steinberg may require for the provision of further activation codes e.g. your proof of purchase (invoice, receipt) and a signed assurance by fax or letter stating your name, address and that the already installed software cannot be used any more. Trial Version Software can be used on a computer also at reinstallation only altogether 30 days.
- 5.5. You can also use another computer other than the one on which the software is to be installed for the activation and transfer of license data to the Steinberg key, if the software is using a Steinberg key. However, in such a case a corresponding access software (Syncrosoft License Control Center, "LCC") must be installed on the computer connected to the Internet, which is subject to a separate licensing agreement.

#### 6. Defect and loss of the Steinberg key

- 6.1. In the case of a defect or damage to the Steinberg key Steinberg or a third party engaged by Steinberg will check the Steinberg key. In the case of a legitimate claim the Steinberg key and the licenses included shall be replaced in return for a handling fee. The licenses will only be replaced provided that they are licenses issued by Steinberg. Further claims against Steinberg are excluded.
- 6.2. Steinberg assumes no liability or obligation if the Steinberg key is mislaid as a result of loss, theft or otherwise. Steinberg reserves the right to block the licenses saved on the Steinberg key upon being notified by the registered user of the loss. The licenses saved on the Steinberg key cannot be replaced.

#### 7. Modification of the software

- 7.1. A modification of the software is permitted only insofar as far as the software is capable of such modification in accordance with its intended function. You may not decompile, disassemble, carry out reverse engineering or try in another manner to determine the source code of the software, unless this is permitted by law. Furthermore, you must not modify the binary code of the software to bypass in any manner the activation function or the use of the license module (Steinberg key and/or Soft eLicenser).

#### 8. No Unbundling

- 8.1. The software usually contains a variety of different files which in its configuration ensure the complete functionality of the software. The software may be used as one product only. It is not required that you use or install all components of the software. You must not arrange components of the software in a new way and develop a modified version of the software or a new product as a result. The configuration of the software may not be modified for the purpose of distribution, assignment or resale.
- 8.2. You may also not sell the Steinberg key separately as a license; the usage rights always remain with the software, in particular with the original software data carrier (e.g. CD).

#### 9. Assignment of Rights

- 9.1. You may assign all your rights to use the software to another person subject to the conditions that (a) you assign to this other person (i) this Agreement and (ii) the software or hardware provided with the software, packed or preinstalled thereon, including all copies, upgrades, updates, backup copies and previous versions, which granted a right to an update or upgrade on this software, (b) you do not retain upgrades, updates, backup copies und previous versions of this software and (c) the recipient accepts the terms and conditions of this Agreement as well as other regulations pursuant to which you acquired a valid software license.
- 9.2. A return of the product due to a failure to accept the terms and conditions of this Agreement, e.g. the product activation, shall not be possible following the assignment of rights.

#### 10. Upgrades and Updates

- 10.1. You must have a valid license for the previous or more inferior version of the software in order to be allowed to use an upgrade or update for the software; the Trial Version Software, however, does not entitle to the upgrade or update. Upon transferring this previous or more inferior version of the software to third parties the right to use the upgrade or update of the software shall expire.
- 10.2. The acquisition of an upgrade or update does not in itself confer any right to use the software.
- 10.3. The right of support for the previous or inferior version of the software expires upon the installation of an upgrade or update.

#### 11. Limited Warranty ("Gewährleistung")

- 11.1. The warranty ("Gewährleistung") for you as first buyer of the software located within the European Union (EU) is specified in Subsection 11.2 and the warranty for you as first buyer of the software located outside the EU is specified in Subsection 11.3 of this Agreement.
- 11.2. Limited Warranty within the EU: In the event that you as a first buyer of the software are located within the EU, the following limitation of liability shall apply.
- 11.2.1. If Steinberg has sold the software directly to you as an end user, Steinberg warrants ("gewährleistet") that the software essentially executes the functions described in the enclosed documentation upon receipt, provided that the software is employed in accordance with the minimum requirements for the operating system and the computer hardware. Insignificant divergences from the functions described in the documentation do not give rise to any warranty claim. Other documents and statements are unremarkable for the composition of the product.
- 11.2.2. If the user is consumer within the EU, the statutory warranty ("Gewährleistung") to defects of the product shall apply. If the user is a businessman, Steinberg provides warranty for defects of the product at its discretion by further fulfillment (improvement or substitute delivery) within one year. However, there exists no warranty for Trial Version Software.



11.3. Limited Warranty outside the EU: In the event that you as a first buyer of the software are located outside the EU, the following limitation of liability shall apply.

11.3.1.

Steinberg ensures ("gewährleistet") to the person who acquires first-time the license for the use of the software according to this Agreement, for the duration of ninety (90) days as of receipt of the software, that the software executes essentially the functions described in the enclosed documentation at receipt, provided that the software is employed according to the minimum requirements for the operating system and the computer hardware. Insignificant differences of the functions described in the documentation do not justify any warranty claim. Other documents and statements are insignificant in terms of the quality of the product.

11.3.2.

If the software does not essentially fulfill the functions described in the documentation, your only warranty claim against Steinberg and Steinberg's only obligation consists in an exchange of the software or a refund of the selling price at the discretion of Steinberg.

11.3.3.

Further warranty obligations according to the laws of your country remain unaffected. However, there exists no warranty for Trial Version Software.

## 12. Limitation of Liability

12.1. The limitation of liability for you as first buyer of the software located within the EU is specified in Subsection 12.2 and the limitation of liability for you as first buyer of the software located outside the EU is specified in Subsection 12.3 of this Agreement.

12.2. Limitation of Liability within the EU: In the event that you as a first buyer of the software are located within the EU, the following limitation of liability shall apply.

12.2.1.

Irrespective of the legal grounds Steinberg shall only be liable to compensate or replace futile expenses in accordance with the following stipulations.

12.2.2.

Steinberg shall be liable for damages caused by the intentional or grossly negligent conduct of Steinberg, its legal representatives, managerial employees or any other vicarious agents and damages arising from death, bodily damage and damage to health from the assumption of a guarantee or from a procurement risk as well as Steinberg's liability for damages pursuant to the Product Liability Act (Produkthaftungsgesetz). In the case of damage caused by the grossly negligent conduct of any other vicarious agents, the liability shall be limited to those damages which are typically to be expected within the scope of an agreement such as the present one. Any further liability under this Agreement shall be excluded.

12.2.3.

In the case of damage caused neither by intentional nor by the grossly negligent conduct of Steinberg, Steinberg shall only be liable where an obligation is violated, the fulfillment of which is of particular significance to the achievement of the contractual purpose (cardinal obligation). In this case, the restrictions of liability pursuant to the foregoing subsection 12.2.2 sentences 2 and 3 shall apply. In case of Trial Version Software, the liability for damages according to this subsection shall be excluded.

12.2.4.

The liability for loss of data shall be limited to the typical cost and effort of retrieving the data which would have occurred, if the data had been stored properly and in a risk-adequate manner.

12.2.5.

This limitation of liability for Steinberg shall also apply for the benefit of Steinberg's employees in the event that any claims are filed directly against them.

12.3. Limitation of Liability outside the EU: In the event that you as a first buyer of the software are located outside the EU, the following limitation of liability shall apply.

12.3.1.

Except for the aforementioned rights Steinberg or Steinberg's authorized distributors assume no liability for loss, damages, claims or costs of any type, direct or indirect damages including consequential damages arising from business interruptions, injuries to persons, or lack of due care or claims of third parties, even if a representative of Steinberg was informed about the possibility of such losses, damages, costs or claims. This limitation shall apply also in the event of a fundamental breach of this Agreement.

12.3.2.

The total liability of Steinberg and its distributors in the context of this Agreement shall be limited to the amount which was paid for the software, if any.

12.3.3.

The aforementioned restrictions shall not apply in countries where a limitation of liability is inadmissible.

## 13 Infringement

You should inform Steinberg promptly in writing if a third party raises any claim against your use of the software. Steinberg may defend you, if you reasonably support Steinberg.

## 14. Final Provisions

14.1. This Agreement constitutes the entire understanding of the subject matter between the parties. Subsidiary agreements have not been concluded.

14.2. Supplements and amendments of this Agreement must be made in writing; a waiver of the requirement of the written form must also be made in writing.

14.3. If any stipulation of this Agreement should be or become invalid, in whole or in part, this shall not affect the validity of the remaining stipulations. The invalid stipulation shall be deemed to be replaced by the parties with a valid regulation which comes as close as possible to the commercially desired purpose originally intended for the ineffective provision; the same shall apply in the case of a lacuna.

14.4. This Agreement shall be governed and construed by the laws of the Federal Republic of Germany and the UN Convention on the International Sale of Goods (CISG) shall not apply.

14.5. The exclusive place of jurisdiction with respect to all disputes based on or in connection with this Agreement shall be Hamburg. Steinberg can bring an action against you at your general place of jurisdiction.

Conforms to environments: E1, E2, E3, E4

**MEMO**

