

Upgrading your STAGEA ELS-01 series to the latest version via the Internet

Preparing to download the version update data

- Make sure that you have an appropriate SmartMedia card or USB flash memory device, formatted for use on the instrument, and having enough free space for the version update data.
- Please check the Compatible USB Device List on the web site before using the USB flash memory.
- The version update data is compressed with zip format. Depending on your computer's OS, you may need a separate application to extract the files.

Downloading the version update data to your computer (Windows or Mac)

- 1 Read the License Agreement and check "Yes, I agree" to show the download button. Click the download button.**

A popup display appears.

- 2 Select [Save file] then click the [OK] button to start downloading the file.**

Save the file to the desired folder, such as the desktop on your computer.

The time necessary for downloading differs depending on your Internet connections and computer.

- 3 When the download is completed, double-click the zip file to extract the installation files to a folder.**

The folder contains the following files:

- ELS-01XINST.PRG
- ELS-01XMAINBOOT.PRG
- ELS-01Xmainprg1.prg
- ELS-01Xmainprg2.prg
- ELS-01Xmainprg3.prg
- ELS-01Xmainprg4.prg
- ELS-01Xmainprg5.prg
- ELS-01Xmainprg6.prg
- ELS-01Xmainprg7.prg
- ELS-01Xmainprg8.prg

In the case of a Mac OS, the files are extracted and a folder containing them is automatically created on the desktop. Select all files in the extracted folder.

- 4 Copy the update data to SmartMedia card or USB flash memory.**

Copy the file to the root folders (shown directly underneath the drive name) of the SmartMedia card or USB flash memory.

Remove the SmartMedia card or USB flash memory from your computer.

Before upgrading

Check that a USB memory device (other USB flash memory or USB-FDD, etc.) is not connected and that a SmartMedia card is not inserted to/in the STAGEA.

- **No USB memory device is connected and no SmartMedia card is inserted.**

There is no problem. Go on to the install operation.

- **SmartMedia card is inserted.**

Remove the SmartMedia card until the installation is completed.

- **USB memory device is connected.**

Disconnect it until the installation is completed. As for a USB-FDD (floppy disk drive), as long as a floppy disk is not inserted, there is no problem.

Installing the version update data

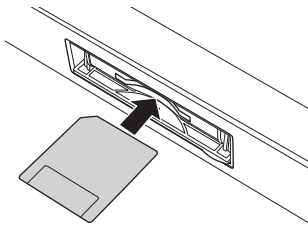
Be sure to carefully follow all the installation instructions below. Please turn off the power of the STAGEA if it is on.

1 Insert the SmartMedia card or USB flash memory device containing the version update to the STAGEA.

• SmartMedia card

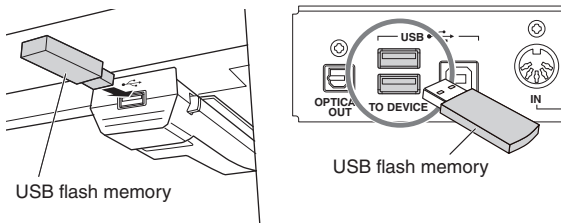
With the terminal (gold-plated) part of the SmartMedia card face down, insert it firmly in the card slot until a click sound is heard.

Make sure to insert the SmartMedia card in the correct position (up/down and front/back).

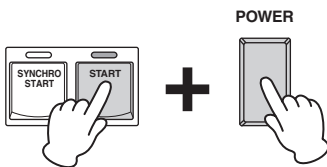


• USB flash memory device

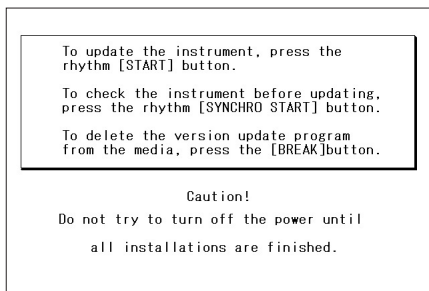
Check the connector of the USB flash memory device and insert it firmly into the USB TO DEVICE terminal located under the keys.



2 Simultaneously hold down the [START] button in the Rhythm section on the panel and turn on the power switch.



Keep holding down the [START] button until the following message appears in the display.



NOTICE

When a panel button other than the [START] button is pressed during the install operation, the install display does not appear. Please make sure that you do not press any buttons such as the volume buttons while you are pressing the [START] button.

3 Install the version update data.

• When executing the operation check program and installing the version update data

Please go to Step 4 “Execute the program check and install the version update.”

- Checking the program and installation takes a maximum of sixty minutes.
- The version update starts automatically after the check is completed.

NOTE

It is not necessary to perform the program check if you have performed it already when you updated the data to version 1.6 or later. If so, please go to Step 5.

• When installing the version update data only (without program check)

Go on to Step 5 “Installing the version update data.”

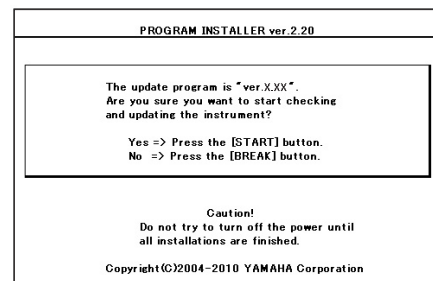
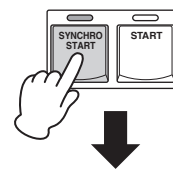
- Installation takes about ten minutes to complete.
- Only installation of the version update is performed.

NOTICE

Make sure that you do not disconnect the SmartMedia card or USB flash memory, or turn off the power during the operation. Doing so may result in damage to the STAGEA.

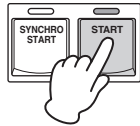
4 Execute the program check and install the version update.

Press the [SYNCHRO START] button in the Rhythm section on the panel. The following display appears.

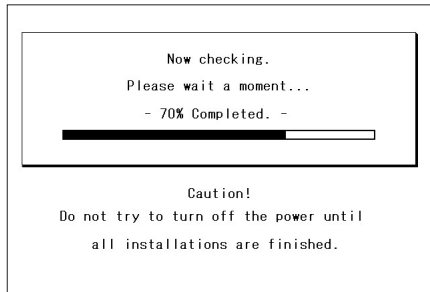


Confirm the version number to be installed, as indicated by the characters “X.XX” above.

Press the [START] button again to start installing the version update.

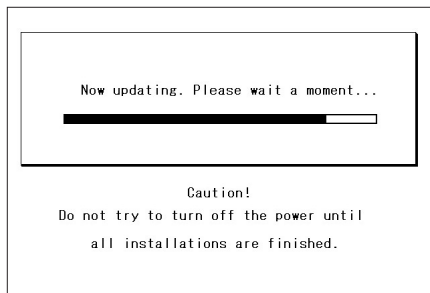


While the program check is in progress, the display below is shown.

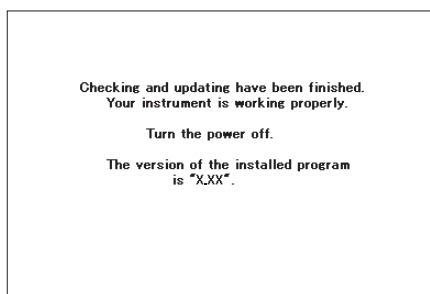


If your particular STAGEA is not included in the supported instruments (according to its serial number) for the program check, the check is skipped automatically and the version update is installed.

Installation of the version update will be automatically be executed, regardless of the check results, when the check is finished.



Program check and version update are completed when the message of the check result and the completion of the installation of the version update data is shown in the display.



The characters "X.XX" indicate the version number installed.

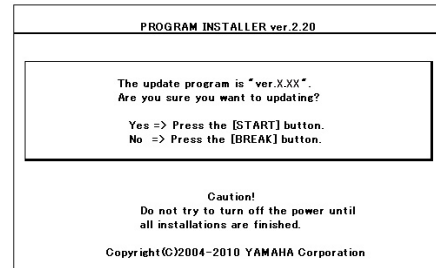
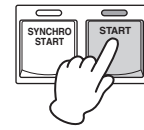
Turn off the STAGEA and remove the SmartMedia card or USB flash memory.

NOTICE

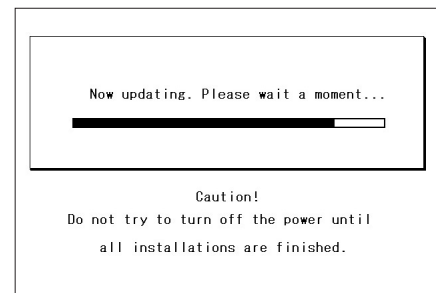
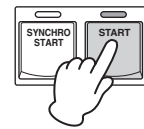
If the check results in an error, follow the message shown in the display.

5 Installing the version update data.

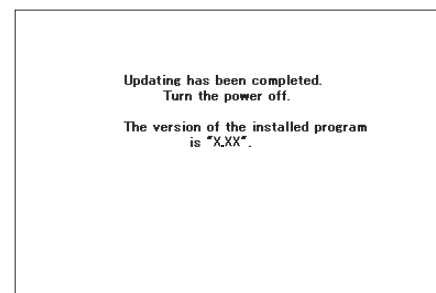
Press the [START] button in the Rhythm section on the panel. The following display appears.



Confirm the version number to be installed, then press the [START] button to start installing the version update.



The version update is complete when the completion message below appears.



Confirm that the latest version has been installed (indicated by the characters "X.XX" above).

Turn off the STAGEA and remove the SmartMedia card or USB flash memory.

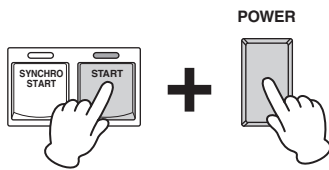
Supplemental instructions

It is possible to delete the version update data in the USB flash memory with the STAGEA.

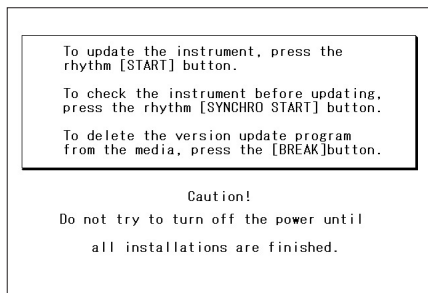
Deleting the version update data

Please turn off the power of the STAGEA if it is on.

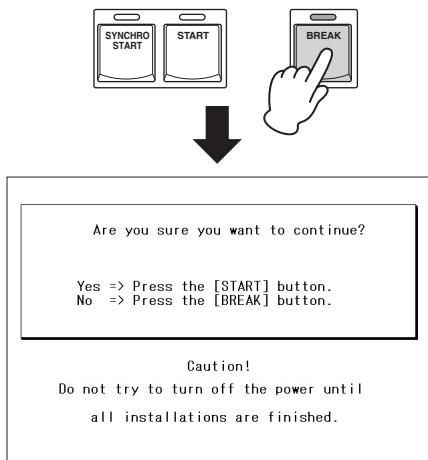
- 1 Insert the SmartMedia or USB flash memory containing the version update data.
- 2 Simultaneously hold down the [START] button in the Rhythm section on the panel and turn on the power switch.



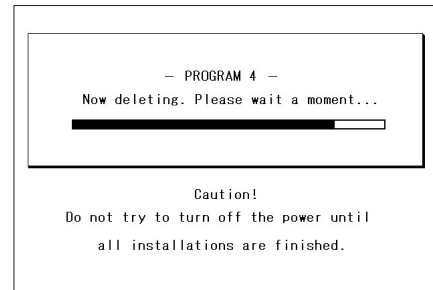
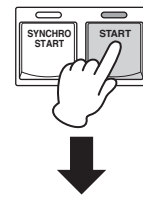
Keep holding down the [START] button until the display below appears.



- 3 Press the [BREAK] button in the Rhythm section on the panel.



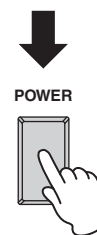
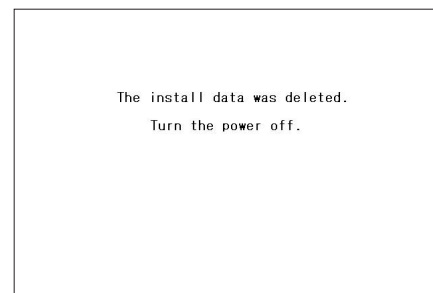
- 4 The Delete operation starts when you press the [START] button in the Rhythm section.



NOTICE

Make sure that you do not disconnect the SmartMedia card or USB flash memory, or turn off the power during the Delete operation. Doing so may result in damage to the SmartMedia card or USB flash memory

- 5 The Delete operation is complete when the message below appears in the display.



Turn off the STAGEA and remove the SmartMedia card or USB flash memory device.