



# Studio Manager V2 Installation Guide

Studio Manager V2 Installationshandbuch

Studio Manager V2 Manuel d'installation

Studio Manager V2 Guía de Instalación

**DM 2000**  
DIGITAL PRODUCTION CONSOLE

**O2R96**  
DIGITAL MIXING CONSOLE

**DM 1000**  
DIGITAL PRODUCTION CONSOLE

**O1V96**  
DIGITAL MIXING CONSOLE

*Version 2*

ENGLISH

DEUTSCH

FRANÇAIS

ESPAÑOL

## Special Notices

- The software and this manual are the exclusive copyrights of Yamaha Corporation.
- Use of the software and this manual is governed by the Software Licensing Agreement which the purchaser fully agrees to upon breaking the seal of the software packaging. (Carefully read the agreement at the end of this manual before installing the software.)
- Copying of the software or reproduction of this manual in whole or in part by any means is expressly forbidden without the written consent of the manufacturer.
- Yamaha makes no representations or warranties with regard to the use of the software and documentation and cannot be held responsible for the results of the use of this manual and the software.
- This disc is a CD-ROM. Do not attempt to play the disc on an audio CD player. Doing so may result in irreparable damage to your audio CD player.
- Copying of the commercially available music sequence data and/or digital audio files is strictly prohibited except for your personal use.
- The screen displays as illustrated in this manual are for instructional purposes, and may appear somewhat different from the screens which appear on your computer.
- Future upgrades of application and system software and any changes in specifications and functions will be announced separately.
- Specifications and descriptions in this installation guide are for information purposes only. Yamaha Corp. reserves the right to change or modify specifications at any time without prior notice. Since specifications may not be the same in every locale, please check with your Yamaha dealer.
- The company names and product names in this installation guide are the trademarks or registered trademarks of their respective companies.
  - \* OMS is a trademark of Opcode Systems, Inc.
  - \* SmartMedia is a trademark of Toshiba Corporation.

Yamaha Professional Audio web site:  
<http://www.yamahaproaudio.com/>

## Contents

<b>Getting Started</b> .....	<b>2</b>
Introduction.....	2
CD-ROM Contents.....	2
Windows System Requirements.....	4
Macintosh System Requirements.....	4
System Hookup.....	5
Configuring Your Yamaha Mixing Console.....	5
Caution when using a USB connection.....	5
<b>Windows Installation</b> .....	<b>5</b>
Adobe Reader.....	5
USB MIDI Driver.....	5
Installing Yamaha CBX Driver (DM2000/O2R96 only).....	8
Installing an Editor.....	8
Installing Studio Manager.....	8
Installing Card Filer (DM2000 only).....	8
<b>Macintosh Installation</b> .....	<b>9</b>
Adobe Reader.....	9
OMS (Open Music System).....	9
USB MIDI Driver.....	10
Installing an Editor.....	11
Installing Studio Manager.....	11
Installing Card Filer (DM2000 only).....	11
Setting Up OMS.....	11
<b>Getting Started</b> .....	<b>12</b>
Overview of Studio Manager.....	12
Starting and setting up Studio Manager.....	13
<b>Troubleshooting</b> .....	<b>14</b>
<b>SOFTWARE LICENSING AGREEMENT</b> .....	<b>15</b>

# Getting Started

## Introduction

Yamaha Studio Manager enables you to control your Yamaha mixing console from a Windows or Macintosh computer. This Installation Guide explains how to install Studio Manager and the necessary driver software for Windows and Macintosh computers. For information on how to use Studio Manager and the various editors, refer to the PDF format Studio Manager manual and the manuals for the various editors which are installed on your computer when Studio Manager is installed. Refer to the owner's manuals for your devices for information on operating the devices.

## CD-ROM Contents

### CD-ROM included with the DM2000/02R96

	Folder	Software	Description
Windows	SM_\DM2k_	DM2000 Editor <sup>1</sup>	DM2000 Editor for Studio Manager (for Windows 2000/XP).
	SM_\02R96_	02R96 Editor <sup>1</sup>	02R96 Editor for Studio Manager (for Windows 2000/XP).
	SM_\SM2_	Studio Manager <sup>1</sup>	Yamaha Studio Manager (for Windows 2000/XP).
	Mididrv_	Yamaha CBX Driver	Yamaha serial driver. Necessary if you are connecting to a serial port on your computer.
	USBdrv_	Yamaha USB MIDI Driver (Windows 98, Me)	Yamaha USB driver. Necessary if you are connecting to a USB port on your computer.
	USBdrv2k_	Yamaha USB MIDI Driver (Windows 2000, XP)	
	Card_	Card Filer <sup>1</sup>	Yamaha utility for transferring and managing data stored on the DM2000's SmartMedia card.
Macintosh	Mac OS X \SM_\DM2k_	DM2000 Editor <sup>1</sup>	DM2000 Editor for Studio Manager (for Mac OS X).
	Mac OS X \SM_\02R96_	02R96 Editor <sup>1</sup>	02R96 Editor for Studio Manager (for Mac OS X).
	Mac OS X \SM_\SM2_	Studio Manager <sup>1</sup>	Yamaha Studio Manager (for Mac OS X).
	Mac OS 9\OMS_	Open Music System (OMS) 2.3.8 <sup>1, 2</sup>	Opcode driver software for use with MIDI applications on Macintosh computers (Mac OS 9 or earlier).
		OMS Setup for YAMAHA	OMS studio setup files for use with the DM2000 and 02R96 (Mac OS 9 or earlier).
	Mac OS 9\USBdrv_	YAMAHA USB MIDI Driver	Yamaha USB driver. Necessary if you are connecting to a USB port on your Macintosh computer.
	Mac OS X\USBdrv_	YAMAHA USB MIDI Driver for OS X	
Mac OS 9\Card_	Card Filer <sup>1</sup>	Yamaha utility for transferring and managing data stored on the DM2000's SmartMedia card (Mac OS 9 or earlier).	

1. For information on using this software, refer to the PDF manual after installation.
2. This software is not supported by Yamaha.

## CD-ROM included with the DM1000/01V96

	Folder	Software	Description
Windows	SM_\DM1000_	DM1000 Editor <sup>1</sup>	DM1000 Editor for Studio Manager (for Windows 2000/XP).
	SM_\01V96_	01V96 Editor <sup>1</sup>	01V96 Editor for Studio Manager (for Windows 2000/XP).
	SM_\SM2_	Studio Manager <sup>1</sup>	Yamaha Studio Manager (for Windows 2000/XP).
	USBdrv_	Yamaha USB MIDI Driver (Windows 98, Me)	Yamaha USB driver. Necessary if you are connecting to a USB port on your computer.
	USBdrv2k_	Yamaha USB MIDI Driver (Windows 2000, XP)	
Macintosh	Mac OS X \SM_\DM1000_	DM1000 Editor <sup>1</sup>	DM1000 Editor for Studio Manager (for Mac OS X).
	Mac OS X \SM_\01V96_	01V96 Editor <sup>1</sup>	01V96 Editor for Studio Manager (for Mac OS X).
	Mac OS X \SM_\SM2_	Studio Manager <sup>1</sup>	Yamaha Studio Manager (for Mac OS X).
	Mac OS 9\OMS_	Open Music System (OMS) 2.3.8 <sup>1, 2</sup>	Opcode driver software for use with MIDI applications on Macintosh computers (Mac OS 9 or earlier).
		OMS Setup for YAMAHA	OMS studio setup files for use with the DM1000 and 01V96 (Mac OS 9 or earlier).
	Mac OS 9\USBdrv_	YAMAHA USB MIDI Driver	Yamaha USB driver. Necessary if you are connecting to a USB port on your Macintosh computer.
Mac OS X\USBdrv_	YAMAHA USB MIDI Driver for OS X		

1. For information on using this software, refer to the PDF manual after installation.
2. This software is not supported by Yamaha.

## Windows System Requirements

The system requirements of your operating system may differ from those listed here.

### Studio Manager

<b>Computer</b>	A computer with a 800 MHz or faster Intel Pentium or Celeron family processor
<b>OS</b>	Windows 2000, XP Home Edition, XP Professional
<b>Memory</b>	256 MB or more
<b>Hard Disk</b>	30 MB or more of free space
<b>MIDI Driver</b>	USB, MIDI, Serial, or mLAN (depending on the connection between the console and the computer)
<b>Display</b>	1024 x 768 pixels, 256 colors or higher 1280 x 1024, High Color 16-bit recommended (If you use display settings of 1024 x 768, turn on the Task Bar's Auto-hide option.)

### Card Filer (DM2000 only)

<b>Computer</b>	A computer with a 100 MHz or faster Intel Pentium or Celeron family processor
<b>OS</b>	Windows 95, 98, 98SE, Me, NT4.0, 2000, XP Home Edition, XP Professional
<b>Memory</b>	8 MB or more
<b>Hard Disk</b>	2 MB or more of free space
<b>Display</b>	800 x 600 pixels, 256 colors or higher

### Yamaha USB MIDI Driver

<b>Computer</b>	A computer with a 166 MHz or faster Intel Pentium or Celeron family processor and a USB port
<b>OS</b>	Windows 98, 98SE, Me, 2000, XP Home Edition, XP Professional
<b>Memory</b>	32 MB or more
<b>Hard Disk</b>	2 MB or more of free space

### Yamaha CBX Driver (DM2000/02R96 only)

<b>OS</b>	Windows 95, 98, 98SE, Me, NT4.0, 2000, XP Home Edition, XP Professional
-----------	---

System requirements for software not listed here can be found on the CD-ROM.

You can check the latest version information of each program/driver and its system requirements at the following website:

<http://www.yamahaproaudio.com/>

## Macintosh System Requirements

The system requirements of your operating system may be different to those listed here.

### Studio Manager

<b>Computer</b>	A Macintosh G4 or better and a USB port
<b>OS</b>	Mac OS X 10.2 or later
<b>Memory</b>	512 MB or more of free memory
<b>Hard Disk</b>	30 MB or more of free space
<b>Display</b>	1024 x 768 pixels, 256 colors or higher 1280 x 1024, 32,000 colors recommended
<b>MIDI Driver</b>	USB, MIDI, Serial, or mLAN (depending on the connection between the console and the computer)

### Card Filer (DM2000 only)

<b>Computer</b>	A Macintosh computer with a PowerPC processor or better
<b>OS</b>	Mac OS 7.5 to 9.2.2 (Mac OS X not supported)
<b>Memory</b>	8 MB or more of free memory
<b>Hard Disk</b>	6 MB or more
<b>Display</b>	800 x 600 pixels, 256 colors or higher

### Yamaha USB MIDI Driver

<b>Computer</b>	A Macintosh computer with a PowerPC processor or better and a USB port
<b>OS</b>	Mac OS 8.6 to 9.2.2 (Mac OS X not supported)
<b>Memory</b>	64 MB or more (recommended: 128 MB or more)
<b>Hard Disk</b>	2 MB or more

### Yamaha USB MIDI Driver for OS X

<b>Computer</b>	A Macintosh computer with a PowerPC processor or higher and a USB port
<b>OS</b>	Mac OS X 10.2 or later
<b>Memory</b>	64 MB or more (recommended: 128 MB or more)
<b>Hard Disk</b>	2 MB or more

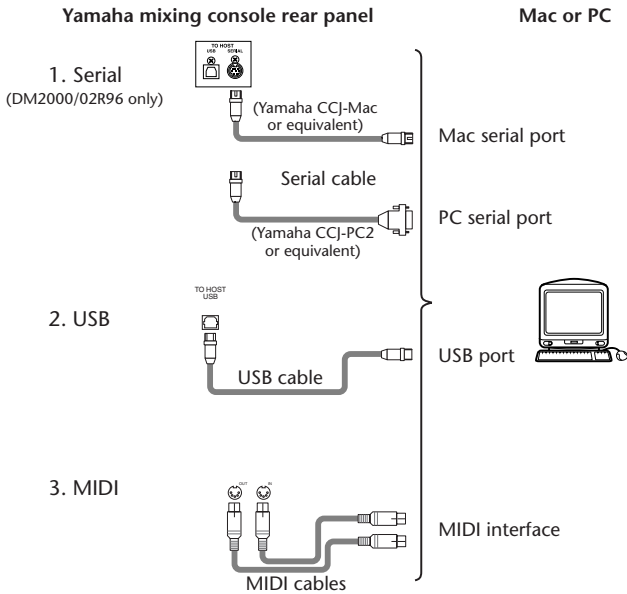
System requirements for software not listed here can be found on the CD-ROM.

You can check the latest version information of each program/driver and its system requirements at the following website:

<http://www.yamahaproaudio.com/>

## System Hookup

The following illustration shows the available hookup methods you can use to connect your Yamaha mixing console to your computer: serial, USB, MIDI.



**NOTE:** Before you connect to serial or MIDI ports, turn off your Yamaha mixing console and computer.

## Configuring Your Yamaha Mixing Console

Press the DISPLAY ACCESS [SETUP] button to open the MIDI/TO HOST Setup page. Under "Studio Manager," select a port and assign an ID to your Yamaha mixing console. If you've connected the DM2000/02R96 to the serial port, set the TO HOST SERIAL options as appropriate (i.e., "PC-2" for a Windows PC, or "Mac" for a Macintosh computer).

**Warning:** Do not set the TO HOST SERIAL option to "Mac" while your Yamaha mixing console is connected to your computer's serial port. Doing so may damage your computer.

## Caution when using a USB connection

If you've used the USB TO HOST connector to connect to your computer, you must perform the following actions. If you fail to do so, your computer or the connected mixing console may hang up, causing data damage or loss. If your computer or mixing console hangs up, turn off the power, and restart your computer.

- Disable the energy conservation mode (suspend/sleep/standby/hibernate) on your computer before connecting your computer via the USB TO HOST connector.
- Connect the USB TO HOST connector to your computer before powering-on the mixing console.
- Close all application programs (such as StudioManager) before powering the mixing console on/off or connecting/disconnecting the USB cable.
- Wait at least three seconds between turning the mixing console on or off, and between connecting and disconnecting the USB cable.

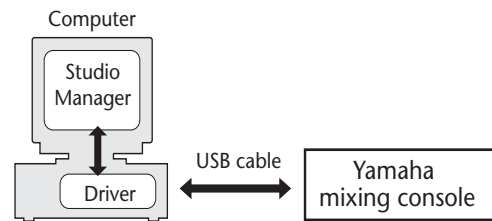
## Windows Installation

### Adobe Reader

Adobe Reader (available free of charge) must be installed on your computer in order for you to view the PDF format manuals for Studio Manager and the various editors. If you don't have Adobe Reader, access the Adobe Corporation website at the URL shown below, and download Adobe Reader.  
<http://www.adobe.com>

### USB MIDI Driver

If you are connecting your Yamaha mixing console to a USB port on your computer, you'll need to install the Yamaha USB driver. If you already have this driver installed, skip this section.



The procedure you use for installing the Yamaha USB driver depends on which version of Windows you're using:

- Windows 98 & 98SE: See page 6
- Windows Me: See page 7
- Windows 2000: See page 7
- Windows XP: See page 8

**NOTE:** Studio Manager is supported by only Windows 2000/XP. The driver for Windows 98/98SE/Me is necessary if you use other MIDI applications on Windows 98/98SE/Me.

## Windows 98 & 98SE

1 Start your computer and Windows, and then insert the included CD-ROM into your computer's CD-ROM drive.

2 Turn off your Yamaha mixing console, and then use a USB cable to connect its USB TO HOST port to a USB port on your computer.

3 Turn on your Yamaha mixing console.

The "Add New Hardware Wizard" appears. If it doesn't appear, try disconnecting and reconnecting the USB cable. Alternatively, open the Add New Hardware control panel.



4 Click [Next].

The following window appears.



5 Select "Search for the best driver for your device (Recommended)," and then click [Next].

The following window appears.



6 Select "Specify a location," and specify "D:\USBdrv\_" (replacing "D" with the drive letter of your CD-ROM drive), and then click [Next].

When the driver is located, "YAMAHA USB MIDI Driver" is displayed, as shown below.



7 Click [Next].

**NOTE:** You may be prompted to insert your Windows CD-ROM. Do not insert it! Click [OK], and in the "Copy files from" section of the subsequent dialog box, enter "D:\USBdrv\_" (replacing "D" with the drive letter of your CD-ROM drive), and then click [OK].

The driver is installed, and the following window appears when the installation is complete.



8 Click [Finish], and then restart your computer.

## Windows Me

- 1 Start your computer and Windows, and then insert the included CD-ROM into your computer's CD-ROM drive.
- 2 Turn off your Yamaha mixing console, and then use a USB cable to connect its USB TO HOST port to a USB port on your computer.
- 3 Turn on your Yamaha mixing console.  
The "Add New Hardware Wizard" appears. If it doesn't appear, try disconnecting and reconnecting the USB cable. Alternatively, open the Add New Hardware control panel.



- 4 Select "Automatic search for a better driver (Recommended)," and then click [Next].  
Windows Me should be able to locate the driver automatically, in which case you can proceed to Step 5. If the driver cannot be located, select "Specify the location of the driver (Advanced)," click [Next], specify your CD-ROM drive (e.g., D:\USBdrv\_), and then continue as prompted.  
The following window appears when the installation is complete.



- 5 Click [Finish], and then restart your computer.

## Windows 2000

- 1 Start your computer to launch Windows, then log in as Administrator.
- 2 Insert the included CD-ROM into your computer's CD-ROM drive.
- 3 Go to My Computer->Control Panel->System->Hardware->Driver Signing->File Signature Verification, select "Ignore—Install all files, regardless of file signature," and then click [OK].
- 4 Turn off your Yamaha mixing console, and then use a USB cable to connect its USB TO HOST port to a USB port on your computer.
- 5 Turn on your Yamaha mixing console.  
The "Found New Hardware Wizard" appears.
- 6 Click [Next].
- 7 Select "Search for a suitable driver for my device (Recommended)," and then click [Next].
- 8 In the subsequent window, select "CD-ROM drives" only, and then click [Next].

**NOTE:** You may be prompted to insert your Windows CD-ROM. Do not insert it! Click [OK], and in the "Copy files from" section of the subsequent dialog box, enter "D:\USBdrv2k\_" (replacing "D" with the drive letter of your CD-ROM drive), and then click [OK].

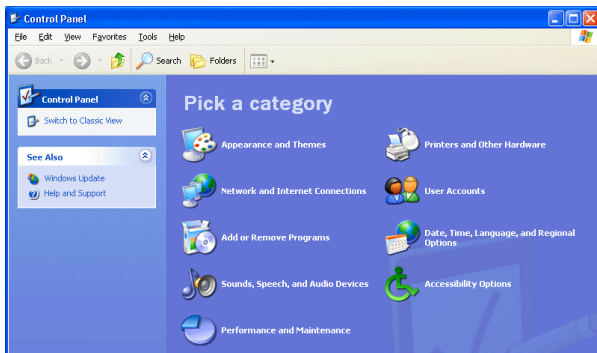
The driver is installed, and the message "Completing the Found New Hardware Wizard" appears.

- 9 Click [Finish], and then restart your computer.

## Windows XP

- 1 Start your computer to launch Windows, then log in as Administrator.
- 2 Insert the included CD-ROM into your computer's CD-ROM drive.
- 3 Click the [Start] button, and then click [Control Panel].

The following window appears.



- 4 Click [Switch to Classic display] in the left column in the window to display all items in the Control Panel.
- 5 Go to System Hardware→Driver signatures→Driver signature options, select "Ignore—Install software without asking for confirmation," and then click [OK].
- 6 Click [OK] to close the "System Properties" window, and then click the Close button to close the "Control Panel" window.
- 7 Turn off your Yamaha mixing console, and then use a USB cable to connect its USB TO HOST port to a USB port on your computer.
- 8 Turn on your Yamaha mixing console.  
The "Found New Hardware Wizard" appears.
- 9 Select "Install software automatically (recommended) (I)," and then click [Next].  
The driver is installed, and the message "Completing the Found New Hardware Wizard" appears.
- 10 Click [Finish], and then restart your computer.

## Installing Yamaha CBX Driver (DM2000/02R96 only)

If you're connecting your Yamaha mixing console to a serial port on your computer, you'll need to install the Yamaha CBX driver. If you already have this driver installed, skip this section.

- 1 Double-click the "Mididrv\_" folder on the CD-ROM.
- 2 Double-click "Setup.exe."
- 3 Follow the on-screen instructions to install the software.

## Installing an Editor

You must install an Editor that supports your console before you install Studio Manager.

- 1 Double-click the "SM\_" folder on the CD-ROM.
- 2 Double-click the folder for the mixing console you're using (for the DM2000, this is "DM2K\_").
- 3 Double-click "Setup.exe."
- 4 Follow the on-screen instructions to install an Editor that supports your console.

## Installing Studio Manager

After you install an Editor, install Studio Manager.

**NOTE:** If you install an Editor and Studio Manager that support another device, an older version of Studio Manager may be installed and Studio Manager may not operate correctly. In this case, install the correct version of Studio Manager from this CD-ROM, or download the latest version of Studio Manager from the Yamaha website.

- 1 Double-click the "SM\_" folder on the CD-ROM.
- 2 Double-click the "SM2\_" folder.
- 3 Double-click "Setup.exe."
- 4 Follow the on-screen instructions to install Studio Manager.

## Installing Card Filer (DM2000 only)

- 1 Double-click the "Card\_" folder on the CD-ROM.
- 2 Double-click "Setup.exe."
- 3 Follow the on-screen instructions to install the software.

For information on using Card Filer, see the "CardFilerManual.pdf." This file is installed in the same folder as Card Filer.



# Macintosh Installation

## Adobe Reader

**NOTE:** Adobe Reader is not required if you're using Mac OS X.

Adobe Reader (available free of charge) must be installed on your computer in order to view the PDF format manual for Card Filer. If you don't have Adobe Reader, access the Adobe Corporation website at the URL shown below, and download Adobe Reader.

<http://www.adobe.com>

## OMS (Open Music System)

**NOTE:** If you are planning to use only Studio Manager, you do not need to install OMS. Install OMS to use MIDI applications other than Studio Manager.

OMS enables you to use MIDI applications on a Macintosh computer with Mac OS 9 or earlier. If you already have OMS 2.3.3 or later installed, skip this section.

- 1 Start your Macintosh, and then insert the included CD-ROM into your computer's CD-ROM drive.
- 2 Double-click the "Mac OS 9" folder on the CD-ROM.
- 3 Double-click the "OMS\_" folder on the CD-ROM.
- 4 Double-click "Install OMS 2.3.8."
- 5 Follow the on-screen instructions to install the software.
- 6 When the installation is complete, click [Restart].

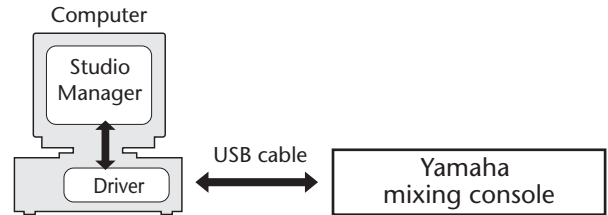
**NOTE:** Once the installation is complete, you may receive an error message warning that the installer did not quit. In this case, choose [Quit] from the [File] menu to quit the installer, then restart your computer.

- 7 Copy the "OMS\_2.3\_Mac.pdf" from the "OMS\_" folder on the CD-ROM to the "Opcode:OMS Applications" folder on your hard disk.

This file contains information on using and configuring OMS.

## USB MIDI Driver

If you're connecting your Yamaha mixing console to a USB port on your computer, you'll need to install the Yamaha USB driver. If you already have this driver installed, skip this section.



The procedure for installing the USB driver varies with different Macintosh OS versions.

- Mac OS 8.6 – 9.2.2: See below.
- Mac OS X: See page 10.

### Mac OS 8.6 – 9.2.2

**NOTE:** This USB MIDI driver is required for MIDI applications other than Studio Manager. Studio Manager supports Mac OS X 10.2 or later, but not earlier. To use Studio Manager, install the USB MIDI driver for Mac OS X.

- 1 Double-click the "Mac OS 9" folder on the CD-ROM.
- 2 Double-click the "USBdrv\_" folder on the CD-ROM.
- 3 Double-click "Install USB MIDI Driver."

The "Install USB MIDI Driver" window appears, as shown below.



Normally there's no need to set the Install Location, because the startup disk is selected by default. To select another disk, click the [Switch Disk] button. Although you can select a destination folder from the pop-up menu, the files are installed in the specified disk's System Folder regardless, so you can ignore that option.

- 4 Click [Install], and follow the on-screen instructions to install the software.
- 5 When the installation is complete, click [Restart].

## Mac OS X

**NOTE:** Before installing the driver, disconnect any USB devices (other than the keyboard and mouse) from the computer.

### 1 Start your computer, then log in as Administrator.

To confirm that the Administrator account is available, select [System Preferences], then [Users (Account)].

### 2 Double-click the “Mac OS X” folder on the CD-ROM.

### 3 Double-click the “USBdrv\_” folder.

### 4 Double-click “USB-MIDI Driver v1. \*\*\*\*\*.mpkg” (\*\*\*\*\* represents the version number).

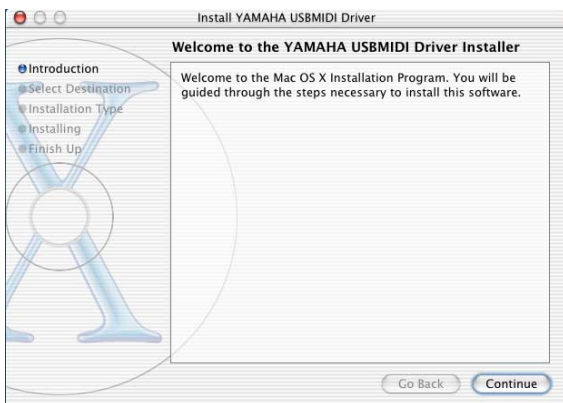
An “Authenticate” window opens, prompting the password.

If the window does not prompt you to enter the password, click the lock icon.



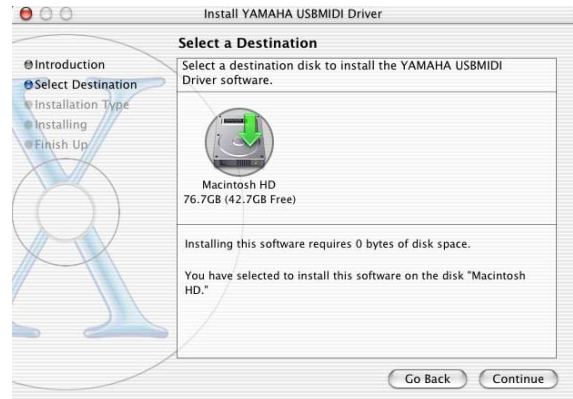
### 5 Enter the password for the Administrator’s account. If you have not set the password, click [OK].

The “Welcome to the YAMAHA USBMIDI Driver Installer” window is displayed.



### 6 Click [Continue].

The “Select a Destination” is displayed.



### 7 Select a destination for the driver installation, then click [Continue].

A window opens, displaying the message “Click install to perform a basic installation of this software.”

The message “Installing this software requires 100MB of disk space” may appear. However, the actual required free disk space is specified in the “Macintosh System Requirements” on page 6.

### 8 Click [Install].

If the driver has already been installed, the [Upgrade] button is displayed instead of the [Install] button.

The driver is installed, and message “The software was successfully installed” is displayed.



### 9 Click the [Close] button.

The driver installation is complete.

You can check the following locations to confirm that the driver has been installed:

- Library -> Audio -> MIDI Drivers -> YAMAHA-USBMIDIPlugin.plugin
- Library -> PreferencePanels -> YAMAHA-USBMIDIPatch.prefPane

## Installing an Editor

You must install an Editor that supports your console before you install Studio Manager.

- 1 Double-click the "Mac OS X" folder on the CD-ROM.
- 2 Double-click the "SM\_" folder.
- 3 Double-click the folder for the mixing console you're using (for the DM2000, this is "DM2K\_").
- 4 Double-click "Install xxxxx\_Editor" ("xxxxx" represents the name of the console).
- 5 Follow the on-screen instructions to install an Editor that supports your console.

## Installing Studio Manager

After you install an Editor, install Studio Manager.

**NOTE:** If you install an Editor and Studio Manager that support another device, an older version of Studio Manager may be installed and Studio Manager may not operate correctly. In this case, install the correct version of Studio Manager from this CD-ROM, or download the latest version of Studio Manager from the Yamaha website.

- 1 Double-click the "Mac OS X" folder on the CD-ROM.
- 2 Double-click the "SM\_" folder.
- 3 Double-click the "SM2\_" folder.
- 4 Double-click "Install Studio Manager."
- 5 Follow the on-screen instructions to install Studio Manager.

## Installing Card Filer (DM2000 only)

- 1 Double-click the "Mac OS 9" folder on the CD-ROM.
- 2 Double-click the "Card\_" folder on the CD-ROM.
- 3 Double-click "Install Card Filer."
- 4 Follow the on-screen instructions to install the software.

For information on using Card Filer, see the "CardFilerManual.pdf." This file is installed in the same folder as Card Filer.

## Setting Up OMS

The "OMS Setup for YAMAHA" folder on the included CD-ROM contains OMS studio setup files preconfigured for use with your Yamaha mixing console.

- 1 Turn off your Yamaha mixing console, and then use a USB cable to connect its USB TO HOST port to a USB port on your computer.  
If you are connecting to the SERIAL TO HOST port, use a serial cable to connect to the Printer or Modem port on your computer.
- 2 Turn on your Yamaha mixing console.
- 3 Start your Macintosh, and then insert the included CD-ROM into your computer's CD-ROM drive.
- 4 Double-click the "Mac OS 9" folder on the CD-ROM.
- 5 Double-click the "OMS\_" folder on the CD-ROM.
- 6 Double-click the "OMS Setup for YAMAHA" folder.  
This folder contains the following OMS studio setup files:
  - \*\*\*\*-USB
  - \*\*\*\*-Modem
  - \*\*\*\*-Printer
 (\*\*\*\* will be the model name)
- 7 Copy the appropriate file to your computer's hard disk, and then double-click it.

**NOTE:** If the AppleTalk dialog box appears, click the [Turn It Off] button, and then click [OK] on the subsequent dialog box.

OMS Setup starts and the "Studio Setup file" window appears.

- 8 Choose [Make Current] from the [File] menu, and then save the setup.

**NOTE:** If the console is connected to the computer's Modem or Printer port, from the [Edit] menu select [Preferences], then select "Use Apple SerialDMA driver when available."

After completing the above setup, your Yamaha mixing console will be the only MIDI device in the current OMS studio setup. In order to use other MIDI devices, or to add an additional Yamaha mixing console, you must create a new studio setup. See the "OMS\_2.3\_Mac.pdf" for more information.

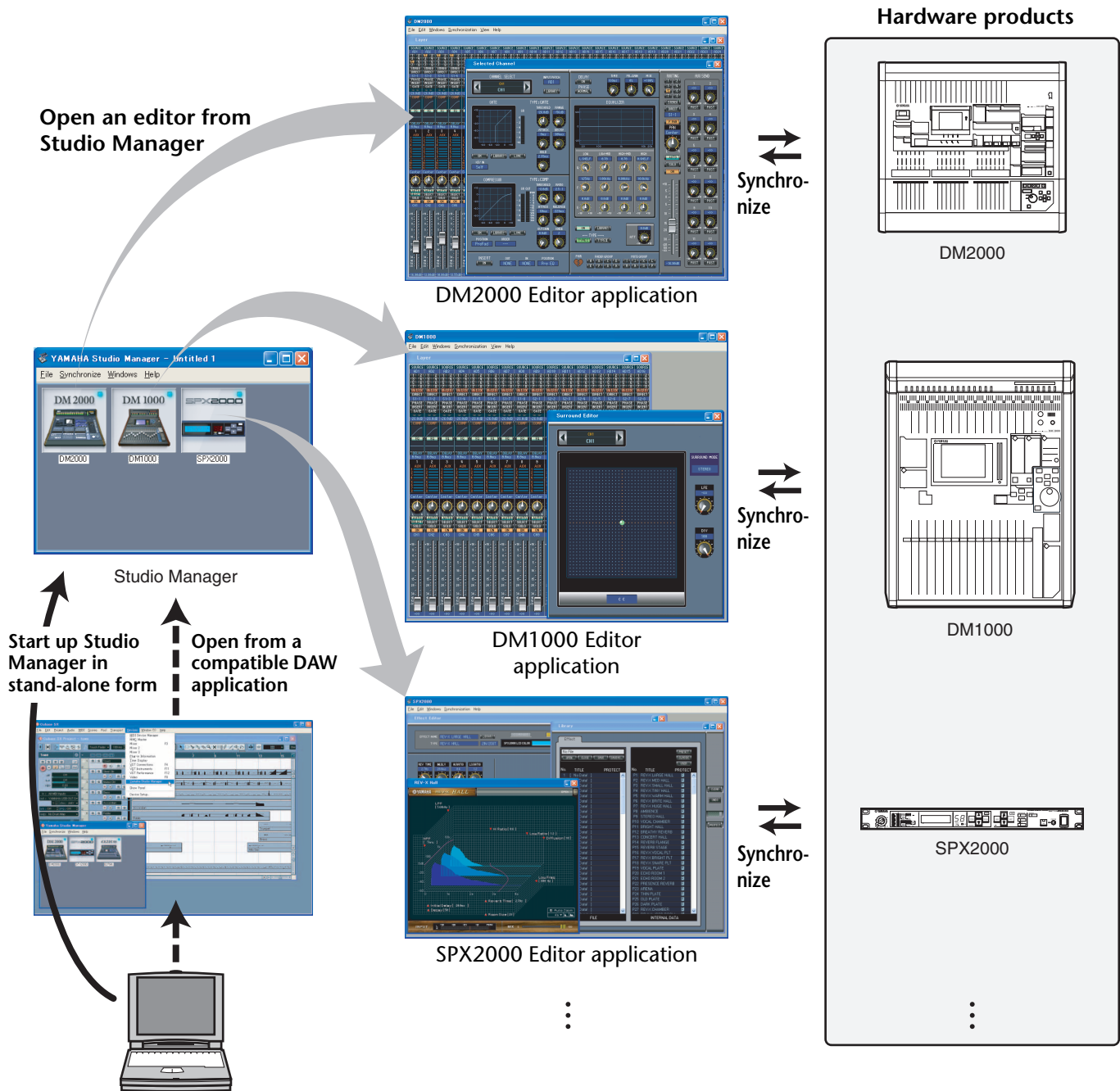
# Getting Started

## Overview of Studio Manager

Studio Manager is a cross-platform application that enables you to start multiple Editors that control YAMAHA hardware products remotely, and to save multiple Editor settings.

You can run Studio Manager as a stand-alone application, or as a plug-in within supported DAW (digital audio workstation) / sequencer applications, such as Cubase SX 3.0.1 or later. In either case, the basic functionality is the same. For the latest information on compatible DAW applications, refer to the following website.

<http://www.studioconnections.org/>



The settings of each editor can be saved and recalled together from Studio Manager or the DAW application. In other words, you can change the settings of your entire system in a single operation by recalling the settings for multiple devices from Studio Manager or your DAW application.

When you want to save setting files, you can do this from Studio Manager to recall multiple devices at once, or from an individual Editor to recall only a specific device. When you save your settings in your DAW application, the Studio Manager settings will also be saved together with the DAW application file, and can also be recalled in the same way. To use Studio Manager, you must first perform the following operations:

1. Start and configure Studio Manager (see below).
2. Start and configure an Editor.
3. Synchronize the application with the corresponding device.

For more information on using the Editors, refer to the Owner's Manual for the Editors.

## Starting and setting up Studio Manager

You'll need to perform the following setup in order to use the editors in Studio Manager.

### 1 Start up Studio Manager.

**As a stand-alone application in Windows 2000/XP:** Click the [Start] button, place your mouse cursor over [Programs (All Programs)] -> [YAMAHA Studio Manager], then click [Studio Manager].

**As a stand-alone application in Mac OS X:** Open folders in the order of "Appears" -> "YAMAHA" -> "Studio Manager," and double-click "SM2."

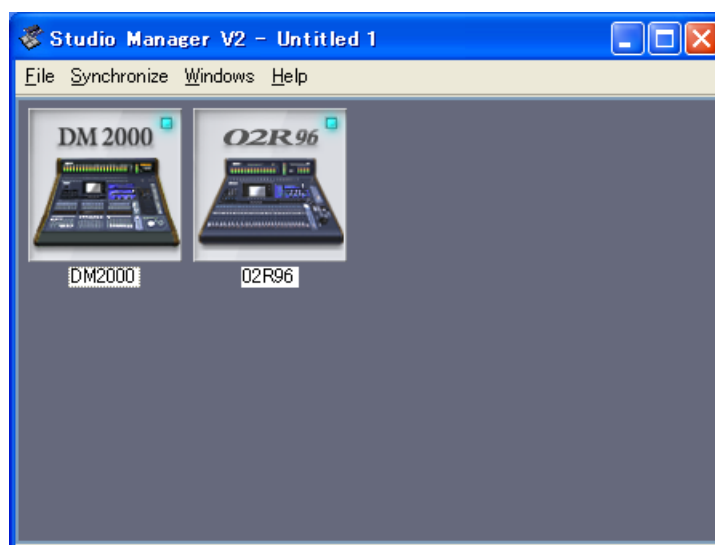
**With Cubase SX:** From Cubase SX's [Device] menu, choose [Yamaha Studio Manager] to open the Studio Manager window. (Studio Manager starts running when Cubase SX is started.)

### 2 Set up Studio Manager.

For details, refer to the PDF format Studio Manager manual.

### 3 Start up each editor.

In the Studio Manager window, double-click the icon for each editor.



Studio Manager window

### 4 Set up each editor.

For details, refer to the PDF manual for each editor.

### 5 Synchronize each editor with your mixing console.

For details, refer to the PDF manual for each editor.

## Troubleshooting

### Q: Cannot install Studio Manager?

A: Check the system requirements for Studio Manager (on page 5 for a Windows machine, or on page 6 for a Macintosh computer). If the computer's operating system does not satisfy the system requirements, you cannot install the software.

### Q: The console is unable to communicate with Studio Manager via USB.

- A: Have you installed the Yamaha USB MIDI driver (Windows page 5, Mac page 9)?
- A: Is the USB cable connected correctly (page 5)?
- A: Is your Yamaha mixing console configured correctly (page 5)?
- A: Is Studio Manager set to the correct ID (page 5, the manual for each editor)?
- A: If a USB hub is connected between the console and the computer, remove it and connect the console directly to the computer.
- A: **Mac OS 9 or earlier:** Is OMS configured correctly (page 11)? On some systems, the included OMS studio setup files may not work correctly. In this case, you must create a new studio setup. See the "OMS\_2.3\_Mac.pdf" for more information.

### Q: Cannot install the Yamaha USB MIDI Driver?

- A: Is the USB cable connected correctly (page 5)?
- A: Try disconnecting the USB cable, and then reconnecting it.
- A: **Windows:** Is USB enabled? When your Yamaha mixing console is connected to your computer for the first time, if the "Add New Hardware Wizard" doesn't appear, it may be because your computer's USB controller is disabled. To check this, open the System control panel, click the Device Manager tab, and check for any crosses (x) or exclamation points (!) next to the "Universal Serial Bus controllers" and "USB Root Hub" items. If these items do have these marks next to them, your USB controller is disabled. For information on enabling your USB controller, refer to your computer's documentation.
- A: **Windows:** If for some reason installation of the Yamaha USB Driver fails, your Yamaha mixing console may be registered as an unknown device and you may not be able to reinstall the driver until the unknown device is deleted. In this case, open the System control panel, click the Device Manager tab, and select the "View devices by connection" option. If an item called "Other devices" appears in the list, click it. If there's an item called "Unknown device," select it and then click the Remove button. Disconnect the USB cable, reconnect it, and then try reinstalling the driver again.

### Q: OMS stops working after installing the Yamaha USB MIDI Driver?

A: **Mac OS 9 or earlier:** The Yamaha USB MIDI Driver supports Mac OS 8.6 through 9.2.2. If you install it on a computer that is running an earlier version of the Mac OS, OMS will not work correctly. In this case you should remove the Yamaha USB MIDI Driver as explained below.

### Q: How to remove & reinstall the Yamaha USB MIDI Driver

A: **Windows 98/Me:** Presuming that the Yamaha USB MIDI Driver was installed successfully, and that your Yamaha mixing console has been recognized correctly, the driver can be removed from your computer as follows. Open the System control panel, click the Device Manager tab, select

the "YAMAHA USB MIDI Driver," and then click the [Remove] button. After deleting the following files, disconnect the USB cable, reconnect it, and then reinstall the driver again.

Windows\Inf\Other\YAMAHA\*\*\*\*.INF (\*\*\*\* will be the model name)  
Windows\System\Xgusb.drv  
Windows\System\Ymidusb.sys

A: **Mac OS 9 or earlier:** The driver can be removed from your computer by deleting the following files, after which you should restart your computer, reinstall the driver, and then set up OMS.

System Folder:Control Panels:YAMAHA USB MIDI Patch  
System Folder:Extensions:USB YAMAHA MIDI Diver  
System Folder:OMS Folder:YAMAHA USB MIDI OMS Driver

A: **Mac OS X:** When you delete the following files, the driver will be removed. After removing the driver, restart the computer and re-install the driver.

— -> Library -> Preferences ->  
jp.co.yamaha.USBMIDIriver.plist (This file is created after the driver is loaded.)  
Library -> Audio -> MIDI Drivers ->  
YAMAHAUSBMIDIriver.plugin  
Library -> PreferencePanels ->  
YAMAHAUSBMIDIPatch.prefPane

*Note: "—" represents folders for users in the Users folder on the hard disk.*

*Note: Only root users can delete the driver. Most users are not authorized to delete the driver.*

### Q: The system fails to function correctly.

- A: Make sure that the console's system software is version 2.0 or later. If the version is older than 2.0, the correct operation of the console along with Studio Manager is not guaranteed.
- A: If your computer seems unresponsive, make sure it satisfies the system requirements (Windows page 4, Mac page 4).
- A: Quit any other applications that you are not using.

### Q: After I installed a new editor, a different editor will no longer start up.

A: For some combinations of versions of Studio Manager and the various editors, an editor may not start up. Please download the latest versions from the website, and reinstall the latest versions of all editors.  
<http://www.yamahaproaudio.com/>

### Q: Studio Manager windows seem to open slowly. How can I achieve better performance?

- A: **Windows:** If you are using a laptop computer, turning off the hardware accelerator may improve system performance. Note that this accelerator setting affects the performance of other application programs.
1. In the Control Panel, double-click [Display] to open the "Display Properties" panel.
  2. Click the Settings tab, then click [Advanced] to open the detailed properties panel.
  3. Click the Troubleshoot tab, then set the "Hardware Acceleration" option to "None."

### Q: Cannot suspend or resume your computer?

- A: **Windows:** Suspend will not work if there are any MIDI applications open.
- A: **Windows 2000:** Depending on your system's USB controller, suspend and resume may not work properly. If your Yamaha mixing console does stop responding, try disconnecting and reconnecting the USB cable.

# SOFTWARE LICENSING AGREEMENT

PLEASE READ THIS SOFTWARE LICENSE AGREEMENT (“AGREEMENT”) CAREFULLY BEFORE USING THIS SOFTWARE. YOU ARE ONLY PERMITTED TO USE THIS SOFTWARE PURSUANT TO THE TERMS AND CONDITIONS OF THIS AGREEMENT. THIS AGREEMENT IS BETWEEN YOU (AS AN INDIVIDUAL OR LEGAL ENTITY) AND YAMAHA CORPORATION (“YAMAHA”).

BY breaking the seal of this package YOU ARE AGREEING TO BE BOUND BY THE TERMS OF THIS LICENSE. If you do not agree with the terms, do not install, copy, or otherwise use this software.

## 1. GRANT OF LICENSE AND COPYRIGHT

Yamaha hereby grants you the right to use the software program(s) and data (“SOFTWARE”) accompanying this Agreement. The term SOFTWARE shall encompass any updates to the accompanying software and data. The SOFTWARE is owned by Yamaha and/or Yamaha’s licensor(s), and is protected by relevant copyright laws and all applicable treaty provisions. While you are entitled to claim ownership of the data created with the use of SOFTWARE, the SOFTWARE will continue to be protected under relevant copyrights.

- **You may** use the SOFTWARE on your computer(s).
- **You may** make one or reasonable copies of the SOFTWARE in machine-readable form for backup purposes only, if the SOFTWARE is on media where such backup copy is permitted. On the backup copy, you must reproduce Yamaha’s copyright notice and any other proprietary legends that were on the original copy of the SOFTWARE.
- **You may** permanently transfer to a third party all your rights in the SOFTWARE, provided that you do not retain any copies and the recipient reads and agrees to the terms of this Agreement.

## 2. RESTRICTIONS

- **You may not** engage in reverse engineering, disassembly, decompilation or otherwise deriving a source code form of the SOFTWARE by any method whatsoever.
- **You may not** reproduce, modify, change, rent, lease, or distribute the SOFTWARE in whole or in part, or create derivative works of the SOFTWARE.
- **You may not** electronically transmit the SOFTWARE from one computer to another or share the SOFTWARE in a network with other computers.
- **You may not** use the SOFTWARE to distribute illegal data or data that violates public policy.
- **You may not** initiate services based on the use of the SOFTWARE without permission by Yamaha Corporation.

Copyrighted data, including but not limited to MIDI data for songs, obtained by means of the SOFTWARE, are subject to the following restrictions which you must observe.

- Data received by means of the SOFTWARE may not be used for any commercial purposes without permission of the copyright owner.
- Data received by means of the SOFTWARE may not be duplicated, transferred, or distributed, or played back or performed for listeners in public without permission of the copyright owner.
- The encryption of data received by means of the SOFTWARE may not be removed nor may the electronic watermark be modified without permission of the copyright owner.

## 3. TERMINATION

This Agreement becomes effective on the day that you receive the SOFTWARE and remains effective until terminated. If any copyright law or provisions of this Agreement is violated, the Agreement shall terminate automatically and immediately without notice from Yamaha. Upon such termination, you must immediately destroy the licensed SOFTWARE, any accompanying written documents and all copies thereof.

## 4. LIMITED WARRANTY ON MEDIA

As to SOFTWARE sold on tangible media, Yamaha warrants that the tangible media on which the SOFTWARE is recorded will be free from defects in materials and workmanship under normal use for a period of fourteen (14) days from the date of receipt, as evidenced by a copy of the receipt. Yamaha’s entire liability and your exclusive remedy will be replacement of the defective media if it is returned to Yamaha or an authorized Yamaha dealer within fourteen days with a copy of the receipt. Yamaha is not responsible for replacing media damaged by accident, abuse or misapplication. TO THE FULLEST

EXTENT PERMITTED BY LAW, YAMAHA EXPRESSLY DISCLAIMS ANY IMPLIED WARRANTIES ON THE TANGIBLE MEDIA, INCLUDING THE IMPLIED WARRANTIES OF MERCHANTABILITY AND FITNESS FOR A PARTICULAR PURPOSE.

## 5. DISCLAIMER OF WARRANTY ON SOFTWARE

You expressly acknowledge and agree that use of the SOFTWARE is at your sole risk. The SOFTWARE and related documentation are provided “AS IS” and without warranty of any kind. NOTWITHSTANDING ANY OTHER PROVISION OF THIS AGREEMENT, YAMAHA EXPRESSLY DISCLAIMS ALL WARRANTIES AS TO THE SOFTWARE, EXPRESS, AND IMPLIED, INCLUDING BUT NOT LIMITED TO THE IMPLIED WARRANTIES OF MERCHANTABILITY, FITNESS FOR A PARTICULAR PURPOSE AND NON-INFRINGEMENT OF THIRD PARTY RIGHTS. SPECIFICALLY, BUT WITHOUT LIMITING THE FOREGOING, YAMAHA DOES NOT WARRANT THAT THE SOFTWARE WILL MEET YOUR REQUIREMENTS, THAT THE OPERATION OF THE SOFTWARE WILL BE UNINTERRUPTED OR ERROR-FREE, OR THAT DEFECTS IN THE SOFTWARE WILL BE CORRECTED.

## 6. LIMITATION OF LIABILITY

YAMAHA’S ENTIRE OBLIGATION HEREUNDER SHALL BE TO PERMIT USE OF THE SOFTWARE UNDER THE TERMS HEREOF. IN NO EVENT SHALL YAMAHA BE LIABLE TO YOU OR ANY OTHER PERSON FOR ANY DAMAGES, INCLUDING, WITHOUT LIMITATION, ANY DIRECT, INDIRECT, INCIDENTAL OR CONSEQUENTIAL DAMAGES, EXPENSES, LOST PROFITS, LOST DATA OR OTHER DAMAGES ARISING OUT OF THE USE, MISUSE OR INABILITY TO USE THE SOFTWARE, EVEN IF YAMAHA OR AN AUTHORIZED DEALER HAS BEEN ADVISED OF THE POSSIBILITY OF SUCH DAMAGES. In no event shall Yamaha’s total liability to you for all damages, losses and causes of action (whether in contract, tort or otherwise) exceed the amount paid for the SOFTWARE.

## 7. THIRD PARTY SOFTWARE

Third party software and data (“THIRD PARTY SOFTWARE”) may be attached to the SOFTWARE. If, in the written materials or the electronic data accompanying the Software, Yamaha identifies any software and data as THIRD PARTY SOFTWARE, you acknowledge and agree that you must abide by the provisions of any Agreement provided with the THIRD PARTY SOFTWARE and that the party providing the THIRD PARTY SOFTWARE is responsible for any warranty or liability related to or arising from the THIRD PARTY SOFTWARE. Yamaha is not responsible in any way for the THIRD PARTY SOFTWARE or your use thereof.

- Yamaha provides no express warranties as to the THIRD PARTY SOFTWARE. IN ADDITION, YAMAHA EXPRESSLY DISCLAIMS ALL IMPLIED WARRANTIES, INCLUDING BUT NOT LIMITED TO THE IMPLIED WARRANTIES OF MERCHANTABILITY AND FITNESS FOR A PARTICULAR PURPOSE, as to the THIRD PARTY SOFTWARE.
- Yamaha shall not provide you with any service or maintenance as to the THIRD PARTY SOFTWARE.
- Yamaha is not liable to you or any other person for any damages, including, without limitation, any direct, indirect, incidental or consequential damages, expenses, lost profits, lost data or other damages arising out of the use, misuse or inability to use the THIRD PARTY SOFTWARE.

## 8. GENERAL

This Agreement shall be interpreted according to and governed by Japanese law without reference to principles of conflict of laws. Any dispute or procedure shall be heard before the Tokyo District Court in Japan. If for any reason a court of competent jurisdiction finds any portion of this Agreement to be unenforceable, the remainder of this Agreement shall continue in full force and effect.

## 9. COMPLETE AGREEMENT

This Agreement constitutes the entire agreement between the parties with respect to use of the SOFTWARE and any accompanying written materials and supersedes all prior or contemporaneous understandings or agreements, written or oral, regarding the subject matter of this Agreement. No amendment or revision of this Agreement will be binding unless in writing and signed by a fully authorized representative of Yamaha.