

Upgrading your STAGEA ELS-02 series to the latest version via the Internet

Preparing to download the version update data

- Make sure that you have an appropriate USB flash memory device, formatted for use on the instrument, and having enough free space for the version update data.
- Please check the Compatible USB Device List on the web site before using the USB flash memory.
- The version update data is compressed with zip format. Depending on your computer's OS, you may need a separate application to extract the file.

Downloading the version update data to your computer (Windows or Mac)

- 1 Read the License Agreement and check “Yes, I agree” to show the download button. Click the download button.**

A popup display appears.

- 2 Select [Save file] then click the [OK] button to start downloading the file.**

Save the file to the desired folder, such as the desktop on your computer.

The time necessary for downloading differs depending on your Internet connections and computer.

- 3 When the download is completed, double-click the zip file to extract the installation file to a folder.**

The folder contains the following file:

- ELS-02SETUP.PRG

In the case of a Mac OS, the files are extracted and a folder containing them is automatically created on the desktop.

Select the file in the extracted folder.

- 4 Copy the update data to USB flash memory.**

Copy the file to the root folders (shown directly underneath the drive name) of the USB flash memory.

Disconnect the USB flash memory from your computer.

Before upgrading

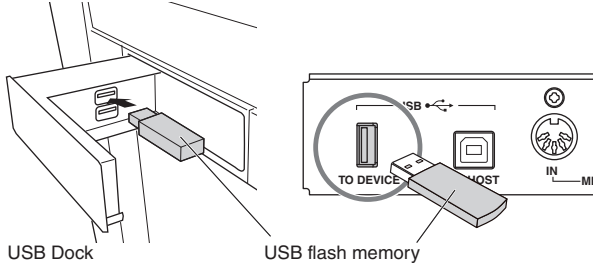
Check that a USB memory device (other USB flash memory, etc.) is not connected to the STAGEA.

Installing the version update data

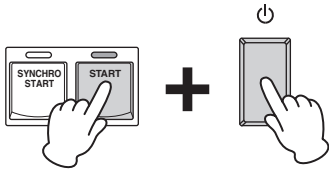
Be sure to carefully follow all the installation instructions below. Please turn off the power of the STAGEA if it is on.

1 Connect a USB flash memory device containing the version update data.

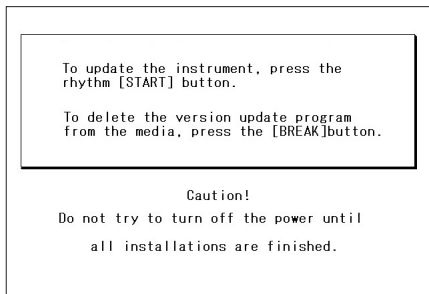
Check the connector of the USB flash memory device and insert it firmly into the USB TO DEVICE terminal.



2 Simultaneously hold down the [START] button in the Rhythm section on the panel and turn on the power switch.



Keep holding down the [START] button until the following message appears in the display.



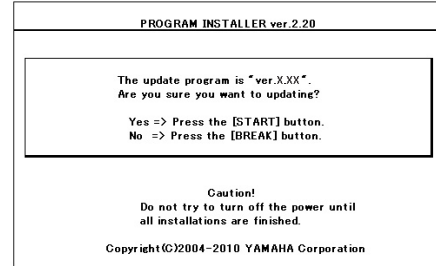
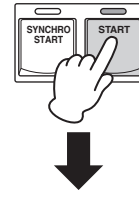
NOTICE

When a panel button other than the [START] button is pressed during the install operation, the install display does not appear. Please make sure that you do not press any buttons such as the volume buttons while you are pressing the [START] button.

NOTICE

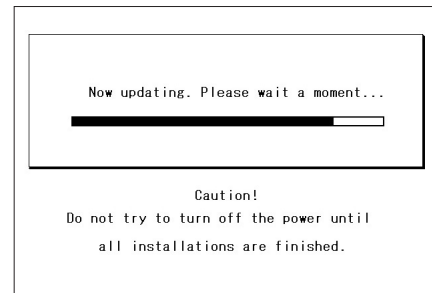
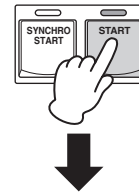
Make sure that you do not disconnect the USB flash memory, or turn off the power during the operation. Doing so may result in damage to the STAGEA.

3 Press the [START] button in the Rhythm section on the panel.

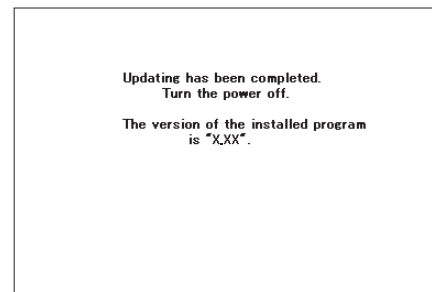


Confirm the version number to be installed, as indicated by the characters "X.XX" above.

Press the [START] button again to start installing the version update.



The version update is complete when the completion message below appears.



Confirm that the latest version has been installed (indicated by the characters "X.XX" above).

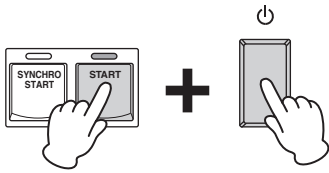
Turn off the STAGEA and disconnect the USB flash memory.

Supplemental instructions

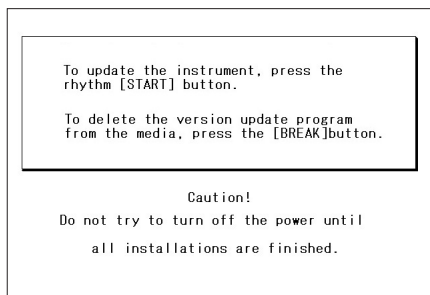
Deleting the version update data

Please turn off the power of the STAGEA if it is on.

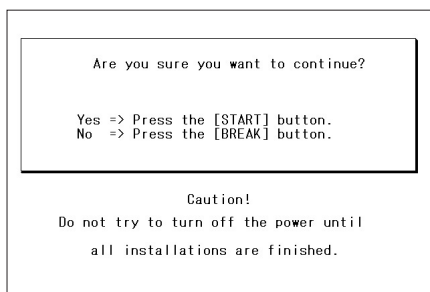
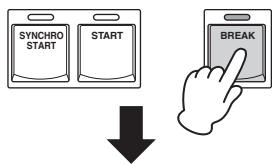
- 1 Connect the USB flash memory containing the version update data.
- 2 Simultaneously hold down the [START] button in the Rhythm section on the panel and turn on the power switch.



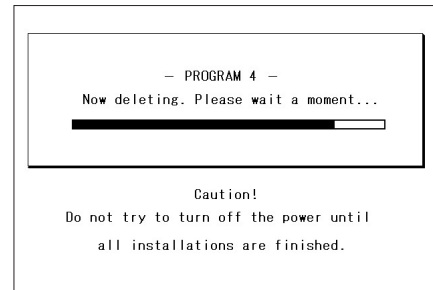
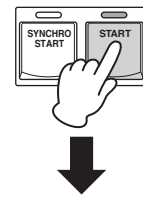
Keep holding down the [START] button until the display below appears.



- 3 Press the [BREAK] button in the Rhythm section on the panel.



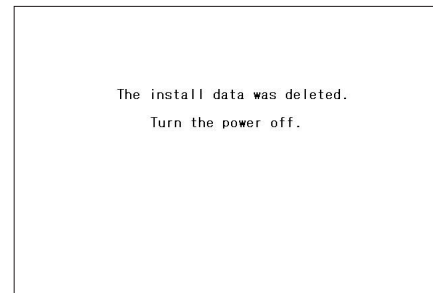
- 4 The Delete operation starts when you press the [START] button in the Rhythm section.



NOTICE

Make sure that you do not disconnect the USB flash memory, or turn off the power during the Delete operation. Doing so may result in damage to the USB flash memory.

- 5 The Delete operation is complete when the message below appears in the display.



Turn off the STAGEA and disconnect the USB flash memory device.