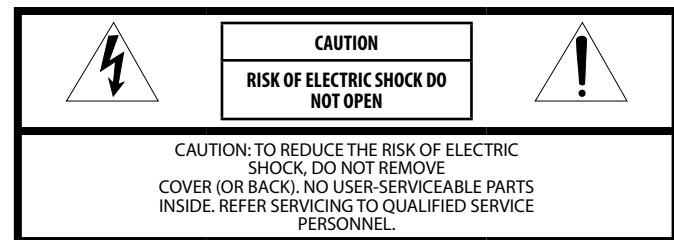


## IMPORTANT SAFETY INSTRUCTIONS



### Explanation of Graphical Symbols

The lightning flash with arrowhead symbol, within an equilateral triangle, is intended to alert you to the presence of uninsulated "dangerous voltage" within the product's enclosure that may be of sufficient magnitude to constitute a risk of electric shock to persons.

The exclamation point within an equilateral triangle is intended to alert you to the presence of important operating and maintenance (servicing) instructions in the literature accompanying the appliance.

**IMPORTANT**  
Please record the serial number of this unit in the space below.  
MODEL:  
Serial No.:  
The serial number is located on the rear of the unit. Retain this Owner's Manual in a safe place for future reference.

This device complies with Part 15 of the FCC Rules. Operation is subject to the following two conditions:  
1) this device may not cause harmful interference, and  
2) this device must accept any interference received including interference that may cause undesired operation.  
See user manual instructions if interference to radio reception is suspected.

- Read these instructions.
- Keep these instructions.
- Heed all warnings.
- Follow all instructions.
- Do not use this apparatus near water.
- Clean only with dry cloth.
- Do not block any ventilation openings. Install in accordance with the manufacturer's instructions.
- Do not install near any heat sources such as radiators, heat registers, stoves, or other apparatus (including amplifiers) that produce heat.
- Do not defeat the safety purpose of the polarized or grounding-type plug. A polarized plug has two blades with one wider than the other. A grounding type plug has two blades and a third grounding prong. The wide blade or the third prong are provided for your safety. If the provided plug does not fit into your outlet, consult an electrician for replacement of the obsolete outlet.
- Protect the power cord from being walked on or pinched particularly at plugs, convenience receptacles, and the point where they exit from the apparatus.
- Only use attachments/accessories specified by the manufacturer.
- Use only with the cart, stand, tripod, bracket, or table specified by the manufacturer, or sold with the apparatus. When a cart is used, use caution when moving the cart/apparatus combination to avoid injury from tip-over.
- Unplug this apparatus during lightning storms or when unused for long periods of time.
- Refer all servicing to qualified service personnel. Servicing is required when the apparatus has been damaged in any way, such as power-supply cord or plug is damaged, liquid has been spilled or objects have fallen into the apparatus, the apparatus has been exposed to rain or moisture, does not operate normally, or has been dropped.

### We Want You Listening For A Lifetime

Yamaha and the Electronic Industries Association's Consumer Electronics Group want you to get the most out of your equipment by playing it at a safe level. One that lets the sound come through loud and clear without annoying blaring or distortion - and, most importantly, without affecting your sensitive hearing. Since hearing damage from loud sounds is often undetectable until it is too late, Yamaha and the Electronic Industries Association's Consumer Electronics Group recommend you to avoid prolonged exposure from excessive volume levels. Operate this unit by the following procedure.

## CAUTION: Read this before operating your unit.

To assure the finest performance, please read this manual carefully. Keep it in a safe place for future reference.

- Install this unit in a well ventilated, cool, dry, clean place - away from direct sunlight, heat sources, vibration, dust, moisture, and/or cold. (Do not use/keep this unit in a car etc.)
- Locate this unit away from other electrical appliances, motors, or transformers to avoid humming sounds.
- Do not expose this unit to sudden temperature changes from cold to hot, and do not locate this unit in an environment with high humidity (i.e. a room with a humidifier) to prevent condensation inside this unit, which may cause an electrical shock, fire, damage to this unit, and/or personal injury.
- Avoid installing this unit where foreign objects may fall onto this unit and/or this unit may be exposed to liquid dripping or splashing. On the top of this unit, do NOT place:
  - Other components, as they may cause damage and/or discoloration on the surface of this unit.
  - Burning objects (i.e. candles), as they may cause fire, damage to this unit, and/or personal injury.
  - Containers with liquid in them, as they may fall and liquid may cause electrical shock to the user and/or damage to this unit.
- Do not cover this unit with a newspaper, tablecloth, curtain, etc. in order not to obstruct heat radiation. If the temperature inside this unit rises, it may cause fire, damage to this unit, and/or personal injury.
- Do not operate this unit upside-down. They may overheat, possibly causing damage.
- Do not use force on switches, knobs, and/or cords.
- When disconnecting the power cable/AC adaptor from the wall outlet, grasp the AC plug; do not pull the cord.
- Do not clean this unit with chemical solvents; this might damage the finish. Use a clean, dry cloth.
- Only the voltage specified on this unit must be used. Using this unit with a higher voltage than specified is dangerous and may cause fire, damage to this unit, and/or personal injury. Yamaha will not be held responsible for any damage resulting from use of this unit with a voltage other than that specified.

- Do not attempt to modify or fix this unit. Contact qualified Yamaha service personnel when any service is needed. The cabinet should never be opened for any reason.
- When not planning to use this unit for long periods of time (i.e. when going on vacation), disconnect all AC plugs from the wall outlet.
- Be sure to read the "TROUBLESHOOTING" section regarding common operating errors before concluding that the unit is faulty.
- Before moving this unit, disconnect all AC plugs from the wall outlets.
- Be sure to use the AC adaptors supplied with this unit. Using an AC adaptor other than those provided may cause fire or damage to this unit.
- Install this unit near the wall outlet and where the AC plugs can be reached easily.
- For added protection for this product during a lightning storm, or when it is left unattended and unused for long periods of time, unplug it from the wall outlet. This will prevent damage to the product due to lightning and power-line surges.
- The batteries shall not be exposed to excessive heat such as sunshine, fire or the like.

There is a chance that placing this unit too close to a CRT-based (Braun tube) TV set might impair picture color. Should this happen, move this unit away from the TV set.

Do not use this unit within 22 cm (9 inches) of persons with a heart pacemaker implant or defibrillator implant.

**WARNING**  
TO REDUCE THE RISK OF FIRE OR ELECTRIC SHOCK, DO NOT EXPOSE THIS UNIT TO RAIN OR MOISTURE.

Even if an iPhone or iPod is not connected to this unit, this unit is not disconnected from the AC power source as long as it is connected to the wall outlet. In this state, this unit is designed to consume a very small quantity of power.

**CAUTION**  
Danger of explosion if battery is incorrectly replaced. Replace only with the same or equivalent type.

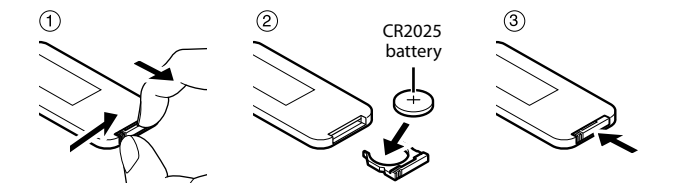
## INTRODUCTION

PDX-60 is a portable player dock designed for iPhone/iPod series. By connecting the iPhone/iPod to the transmitter, wireless operation via the connected iPhone/iPod is possible. With the iPhone/iPod connected to the dock terminal, the unit can be operated by the remote control. Also the charging cradle can be used for charging the iPhone/iPod, or to play music or movies for an extended time. Alphabetical letters below (A, B, etc.) can be used for reference to the illustrations on the separate sheet "Quick Manual" for details.

### Supplied accessories

- AC adaptor (for the speaker: DC 15 V, 2.66 A) (model number: NU40-2150266-13) (A) ... 1  
Power cable (B) ..... 1  
Transmitter (PDX-50TX) (C) ..... 1  
Charging cradle (PDX-50BC) (D) ..... 1  
AC adaptor (for the charging cradle: DC 5 V, 1 A) (E) ..... 1  
Remote control (F) ..... 1  
iPod dock adaptor  
 □ iPod with color display (20 GB or 30 GB) or U2 Special Edition ..... 1  
 □ iPod with color display (40 GB or 60 GB) or iPod (40 GB) ..... 1  
 □ iPod mini (4 GB or 6 GB) ..... 1  
 \* The mark (A, B, or C) is shown on the back of each iPod dock adaptor.  
Owner's Manual (this manual) ..... 1  
Quick Manual ..... 1

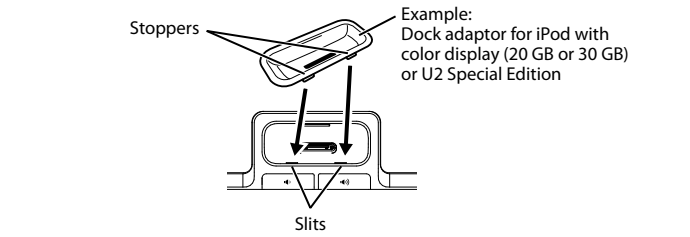
### Replacing the battery in the remote control



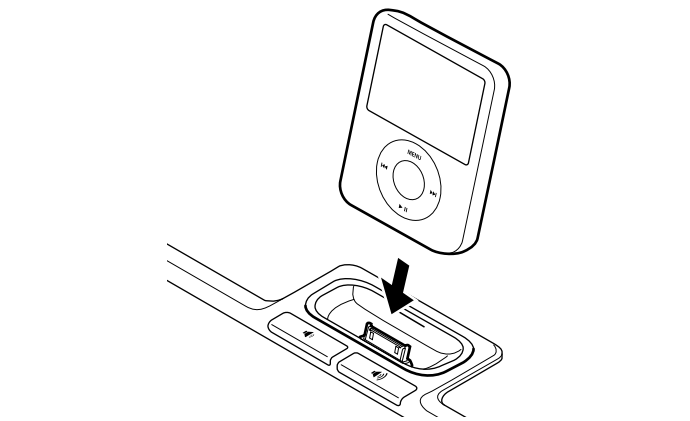
### Inserting an iPod dock adaptor

Insert the iPod dock adaptor supplied with your iPod into the slot of the speaker. Depending on the type of your iPod, you may need to insert one of the iPod dock adaptors supplied with this unit.

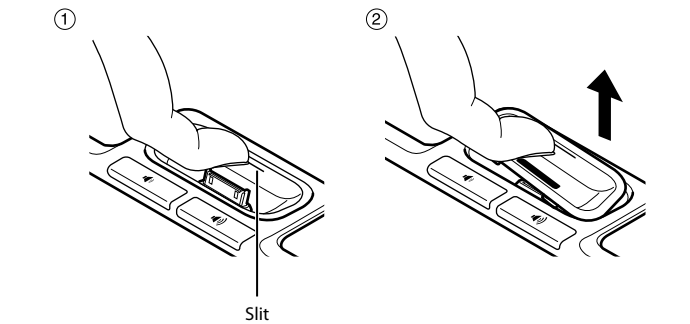
### 1 Insert the iPod dock adaptor, aligning its stoppers with the slits in the slot of the speaker, until it clicks into place.



### 2 Insert the iPod firmly in the dock terminal.



※ When you remove the iPod dock adaptor from the speaker, insert one of your finger nails into the slit on the iPod dock adaptor and pull it up.



## SPECIFICATIONS

Supported iPod ..... iPod (5th generation), iPod classic, iPod nano, iPod touch  
Supported iPhone ..... iPhone, iPhone 3G  
Maximum RMS output power per channel (6Ω 1 kHz, 10% THD) ..... 15 W + 15 W  
Power Supply ..... AC 120 V, 60 Hz  
Power Consumption  
PDX-60 ..... 10 W  
PDX-50TX/PDX-50BC ..... 4 W  
Power Consumption without connecting iPhone/iPod  
PDX-60 ..... less than 1 W  
PDX-50TX/PDX-50BC ..... less than 1 W  
Transmission range of the transmitter (PDX-50TX) ..... Approx. 20 m (65.6 ft) (without interference)

Maximum playback duration of the transmitter (PDX-50TX) ..... Approx. 10 hours (from full charged iPod)  
Number of speakers which can be simultaneously transmitted to ..... Up to 7 speakers (depending on the circumstances)  
Dimensions (W × D × H) ..... 350 × 125 × 109 mm (13-3/4" × 4-7/8" × 4-1/4")  
Weight (without accessories) ..... 1.7 kg (3.7 lbs)

iPod (4th generation or before), iPod without Dock connector, iPod photo or iPod mini are not supported by this unit.

Specifications are subject to change without notice.



**iPod®, iPhone™**  
iPod is a trademark of Apple Inc., registered in the U.S. and other countries.  
iPhone is a trademark of Apple Inc.  
"Made for iPod" means that an electronic accessory has been designed to connect specifically to iPod and has been certified by the developer to meet Apple performance standards.  
"Works with iPhone" means that an electronic accessory has been designed to connect specifically to iPhone and has been certified by the developer to meet Apple performance standards.  
Apple is not responsible for the operation of this device or its compliance with safety and regulatory standards.

## CONTROLS AND FUNCTIONS

### Transmitter (PDX-50TX) [A]

Connect an iPhone/iPod series. When the iPhone/iPod is disconnected from both the transmitter and dock terminal, the unit will be in standby mode. The iPhone/iPod can be connected (or disconnected) anytime.

### Charging cradle (PDX-50BC) [D]

Charges the battery of the iPhone/iPod.

### DC IN 15V jack [G]

Connect the AC adaptor (for the speaker) to this jack to supply power to the speaker. When the AC adaptor is connected, the speaker will be in standby mode, consuming a small quantity of electricity. When an iPhone/iPod is connected to the transmitter (PDX-50TX)/dock terminal, the unit turns on from standby mode. When the iPhone/iPod is disconnected from both the transmitter and dock terminal, the unit will be in standby mode.

### DC IN 5V jack [H]

Connect the AC adaptor (for the charging cradle) to this jack to supply power to the charging cradle.

### ◀ / ▶ (Volume keys) [I]

Adjusts the volume level.

### Dock terminal [O]

Connect the iPhone/iPod series. When the iPhone/iPod is connected to the dock terminal, its battery will be charged. When the iPhone/iPod is disconnected and wireless communication is disconnected, the unit will be in standby mode. The iPhone/iPod can be connected (or disconnected) anytime.

### Note

When the iPhone/iPods are connected to both the transmitter and the dock terminal, the iPhone/iPod connected to the transmitter has priority. In this case, the status indicator flashes green and red three times (\*\* "Status indicator (LED)" in this section).

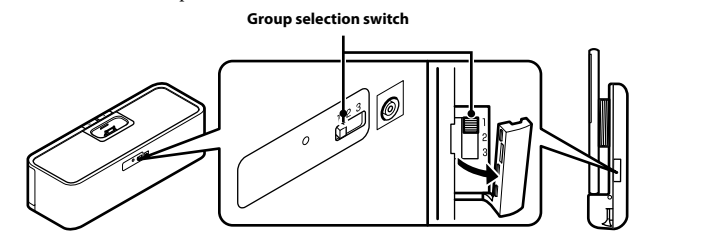
### Status indicator (LED) [C]

Indicates the current status of the unit.

LED status (speaker/transmitter)	The current status of this unit
Off	The unit is in standby mode. An iPhone/iPod is not connected, or has stopped playing. (However, lights up for 30 seconds or 2 minutes** after connecting or stopping playback.) ** iPhone, iPod touch and iPod nano 4G only
Flashes green	Connection in progress, please wait.
Flashes green once	Adjusting the volume level or operating with the remote control.
Lights up green	The unit turns on. An iPhone/iPod is connected.
Lights up green and flashes red	Flashes red for 2 seconds: An unsupported iPod is connected. Keeps flashing red: Connection failed. (Connect again.)
Flashes red	The protection circuitry has been activated. (Disconnect the AC adaptor and wait for a while.)
Flashes red once	The volume of this unit is set to maximum or minimum.
Flashes red (regardless of green status)	The battery of the iPhone/iPod is low.
Flashes green and red three times	Wireless communication is active. Playing the iPhone/iPod connected to the dock terminal and remote control are invalid.

### Group selection switch

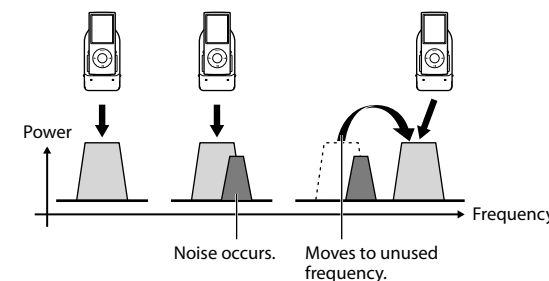
Use these switches to change the group setting for both speaker and transmitter. Connection between transmitter and speaker is made by setting their group selection switches to the same position.



## TROUBLESHOOTING

Refer to the table below if the unit does not function properly. If the problem you are experiencing is not listed below, or if the instruction below does not help, turn off this unit, disconnect the power cable, and contact the nearest authorized Yamaha dealer or service center.

Problem	Cause	Remedy	
<b>No sound</b>	The volume is turned down.	Turn up the volume.	
	The iPhone/iPod is not connected to the transmitter/dock terminal firmly.	Connect the iPhone/iPod firmly.	
	Earphones are connected to the iPhone.	Remove the earphones.	
	The signal from the transmitter is blocked by your body or metallic objects, etc.	Change the way of holding, the orientation, or the position of the transmitter to avoid your body or metallic objects blocking the signal.	
	There is a device (microwave oven, wireless LAN, etc.) outputting signals in the 2.4 GHz frequency band nearby.	Relocate this unit.	
	Distance is too far.	Move the transmitter closer to the speaker.	
	The battery of the iPhone/iPod is low.	Charge the iPhone/iPod.	
	The power of the speaker is off.	Connect the AC adaptor correctly.	
	The iPhone/iPod software version has not been updated.	Download the latest iTunes software to update the iPhone/iPod firmware version to the latest.	
	The iPhone/iPod is in the process of connecting with the speaker.	Please wait for a while.	
<b>Cannot change the volume by changing the volume of the iPhone/iPod.</b>	The speaker and transmitter are not connected since they are set to different groups.	Set both the speaker and transmitter to the same group (** "Group selection switch" in "CONTROLS AND FUNCTIONS").	
	The speaker is connected to another unit.	Select a different group by changing the group selection switch of the speaker and transmitter (** "Group selection switch" in "CONTROLS AND FUNCTIONS").	
	The protection circuitry has been activated by excessive volume.	Turn down the volume.	
	The iPhone/iPod in use is not supported by this unit, is not connected correctly, or its firmware version is out of date.	Use the supported iPhone/iPod. Connect the iPhone/iPod firmly. Update the iPhone/iPod firmware version to the latest. If the problem cannot be solved, even the latest firmware, reset the iPhone/iPod.	
	<b>The iPhone/iPod display does not change by pressing the remote control volume keys.</b>		
	<b>The unit cannot be operated by the remote control.</b>	You are trying to control the iPhone/iPod connected to the transmitter by the remote control.	iPhone/iPod remote control operation is only possible when connected to the dock terminal.
	<b>The power of the speaker does not turn off after the iPhone/iPod is disconnected from the transmitter.</b>	The speaker is connected to another unit.	Change the group setting (** "Group selection switch" in "CONTROLS AND FUNCTIONS").
	<b>Suddenly the speaker produces sound even though an iPhone/iPod is not connected.</b>		
	<b>Using iPhone/iPods on both the transmitter and dock terminal, the iPhone/iPod on the dock terminal will not play.</b>	When the iPhone/iPods are connected to both the transmitter and the dock terminal, the iPhone/iPod connected to the transmitter has priority. In this case, the status indicator flashes green and red three times (** "Status indicator (LED)" in "CONTROLS AND FUNCTIONS").	To play the iPhone/iPod connected to the dock terminal, disconnect the iPhone/iPod from the transmitter.
	<b>Transmitted sound fluctuates.</b>	If noise occurs at the same frequency the transmitter is using, the unit will search and move to another (unused) frequency, which may cause sound to fluctuate.	This is not malfunction. If fluctuation occurs frequently, relocate the unit or connect the iPhone/iPod to the dock terminal.





# YAMAHA PDX-60

