

5.1-channel Network AV Receiver with convenient functions including MHL Link, AirPlay and compatibility with AV Controller app and music streaming services.



Audio Features

- 5-channel powerful surround sound
 - 115W per Channel (6 ohms, 1 kHz, 0.9 % THD, 1 ch driven)
 - 80W per Channel (6 ohms, 20Hz-20kHz, 0.09 % THD, 2 ch driven)
 - 135W per Channel (6 ohms, 1kHz, 10% THD, 1ch driven, JEITA)
- HD Audio format decoding: Dolby TrueHD and DTS-HD Master Audio; Dolby Digital Plus and DTS-HD High Resolution Audio
- Full discrete amp configuration
- Burr-Brown 192 kHz/24-bit DACs for all channels
- Direct Mode for high quality sound reproduction
- Low jitter PLL circuitry helps optimise sound imaging
- FLAC or WAV 192kHz/24-bit audio playback

Video Features

- 4K pass-through for next generation super high resolution images
- HDMI (5 in/1 out) with 3D and Audio Return Channel
- Supports Deep Colour (30/36 bit), x.v.Colour, 24 Hz Refresh Rate and Auto Lip-Sync compensation

Advanced Features

- SCENE buttons with direct power on (BD/DVD, TV, Net and Radio)
 - Quick and simple to use
 - HDMI CEC powers up compatible TVs and Blu-ray Disc™ players
- Network functions
 - AirPlay allows music streaming from Mac, PC, iPod, iPhone, iPad
 - AV Controller app for operating various functions from an iPod, iPhone, iPad or Android phones
 - Access to: Internet Radio (vTuner): MP3, WMA
 - Music files on PC/NAS: WAV, MP3, WMA, AAC, FLAC
 - DLNA 1.5 certified
- MHL supports full HD video and audio from mobile phones and portable devices
- Front panel USB Digital Connection for iPod, iPhone and iPad
- Charging of iPod, iPhone and iPad via USB when AV Receiver is off

- iPod/iPhone/iPad song titles displayed in English and Western European languages on the front panel
- Multi language colour OSD for improved visibility (English, German, French, Spanish, Russian, Italian, Japanese and Chinese)
- HDMI CEC with versatile control from AV Receiver remote control
- YPAO sound optimisation for automatic speaker setup
- Audio input assign capability for HDMI and component video input
- Ability to change HDMI input while in Standby Through mode
- Audio Delay for adjusting Lip-Sync (0-250 ms)
- 40-station preset tuning / Auto preset tuning
- Preset remote unit
- Background Video feature (for Radio only)
- DC Out for optional accessories

Surround Realism

- HD Audio decoding with CINEMA DSP 3D (17 DSP programmes)
- Compressed Music Enhancer with CINEMA DSP
- Virtual Presence Speaker function for CINEMA DSP 3D surround without Front Presence Speakers
- Adaptive DRC (Dynamic Range Control) and Adaptive DSP level
- SILENT CINEMA and Virtual CINEMA DSP

Eco-Friendly Design

- ECO mode operation for about 20%* less power consumption
 - *Compared to power consumption when ECO mode is off (Yamaha measurement).
- Auto power standby function with variable time setting
- Low standby power consumption of 0.1W



The RX-V475 offered with black, titanium and gold finish available in some areas.

AV Receiver RX-V475

NEW PRODUCT BULLETIN

Network Functions Add More Convenience: AirPlay and AV Controller

AirPlay allows music streaming from a Mac, PC, iPod, iPhone or iPad. The 18-language compatible AV Controller app lets you easily operate various functions from an iPod, iPhone, iPad or Android device.



MHL (Mobile High-Definition Link) Support

The RX-V475 supports playback of up to 1080p video and multi-channel audio from MHL-compatible mobile phones and portable devices. It also charges the connected devices.



USB Digital Connection for iPod, iPhone and iPad on the Front Panel

A USB port on the front panel provides convenient connection for your iPod/iPhone/iPad, which also charges when connected. Because the digital signal from the iPod/iPhone/iPad is transmitted directly to the AV Receiver, noise interference is minimized and sound quality is much better.



Main Specifications

Audio Section

Rated Output Power (6 ohms, 1 kHz, 0.9 % THD, 1 ch driven)	
Front L/R	115 W + 115 W
Centre	115 W
Surround L/R	115 W + 115 W
Rated Output Power (6 ohms, 20 Hz-20 kHz, 0.09 % THD, 2 ch driven)	
Front L/R	80 W + 80 W
Maximum Effective Output Power (6 ohms, 1 kHz, 10 % THD, 1 ch driven, JEITA)	
Front L/R	135 W + 135 W
Centre	135 W
Surround L/R	135 W + 135 W
Dynamic Power/Ch (Front L/R, 6/4/2 ohms)	
	110/130/160 W

General

Standby Power Consumption	
HDMI Control off, Standby Through off	0.1 W
HDMI Control on, Standby Through on	1.0 W
Network Standby Through on	2.0 W
Dimensions (W x H x D)	
	435 x 161 x 315 mm
Weight	
	8.1 kg; 17.9 lbs.

Optional Accessories

WiFi Adapter YWA-10



WiFi Adapter for Wireless Streaming of Additional Music Sources

The YWA-10 makes it possible to stream music wirelessly to the AV receiver from a PC, NAS and internet. 2 LAN port design supports connection of other network device such as Blu-ray player. Power is supplied from the AV receiver via USB.



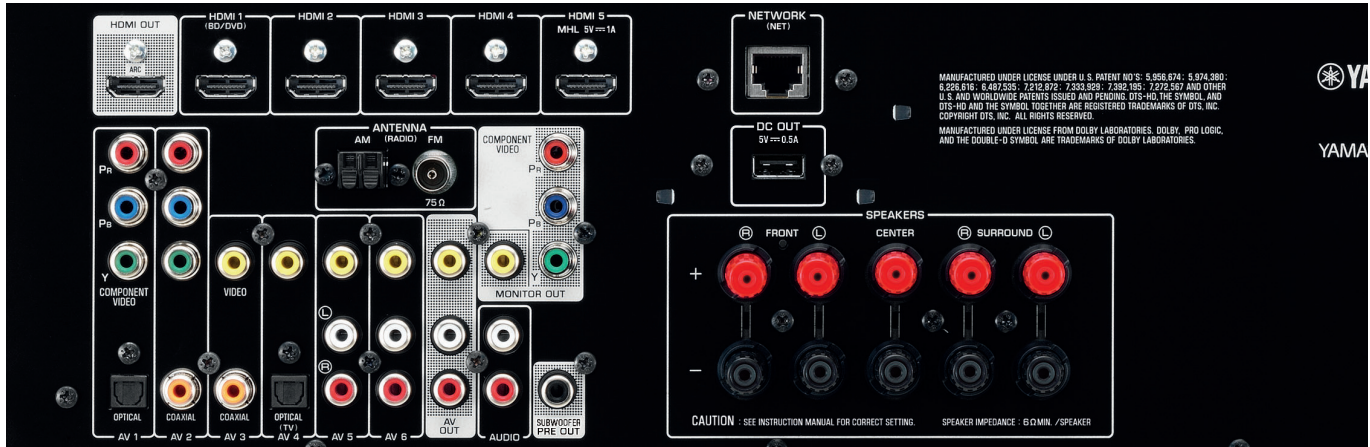
Bluetooth® Wireless Audio Receiver YBA-11



Bluetooth Adapter for Wireless Music Streaming



With the YBA-11, you'll be able to stream music wirelessly from a Bluetooth capable mobile phone or a PC to the AV receiver. Thanks to the digital connection and aptX® audio coding algorithm, you'll enjoy wireless music streaming with optimum sound quality.



Extensive Connections

Inputs	Outputs
HDMI (Audio Input Assignable, HDMI 5: MHL input compatible)	HDMI
Network	Analogue Audio
USB*	Component Video Monitor
Radio Antenna** (FM/AM)	Composite Monitor
Optical Digital	Composite AV
Coaxial Digital	Speaker** (without subwoofer)
Analogue Audio*	Subwoofer
Component Video (Audio Input Assignable)	DC Out**
Composite Video**	Headphone Jack
Audio Mini Jack*	

* Including front panel terminals.

** The shape of the FM antenna terminal varies according to area.

• "Made for iPod," "Made for iPhone," and "Made for iPad" mean that an electronic accessory has been designed to connect specifically to iPod, iPhone, or iPad, respectively, and has been certified by the developer to meet Apple performance standards. Apple is not responsible for the operation of this device or its compliance with safety and regulatory standards. Please note that the use of this accessory with iPod, iPhone, or iPad may affect wireless performance. AirPlay, the AirPlay logo, iPhone, iPod, iPod classic, iPod nano, iPod touch, and iTunes are trademarks of Apple Inc., registered in the U.S. and other countries. iPad is a trademark of Apple Inc. • The Bluetooth® word mark and logos are registered trademarks owned by Bluetooth SIG, Inc. and any use of such marks by Yamaha Corporation is under license. Other trademarks and trade names are those of their respective owners. • The "aptX" software is copyright CSR plc or its group companies. All rights reserved. The aptX™ mark and the aptX logo are trademarks of CSR plc or one of its group companies and may be registered in one or more jurisdictions. • Dolby and the double-D symbol are registered trademarks of Dolby Laboratories. • DTS, DTS-HD, the Symbol, & DTS or DTS-HD and the Symbol together are registered trademarks of DTS, Inc. • HDMI, the HDMI logo and High-Definition Multimedia Interface are trademarks or registered trademarks of HDMI Licensing LLC. • MHL and the MHL logo are a trademark, registered trademark or service mark of MHL, LLC in the United States and/or other countries. • Burr-Brown products are trademarks of Texas Instruments, Inc. • "x.v.Color" is a trademark of Sony Corporation. • CINEMA DSP is a trademark of Yamaha Corporation. • SILENT CINEMA is a trademark of Yamaha Corporation. • Product designs and specifications are subject to change without notice.

P10024753GBFARLTKHS-RXV475@NPB