



**Clean, simple body,
packed with
beautiful functionality.**

Visually Intriguing Speaker

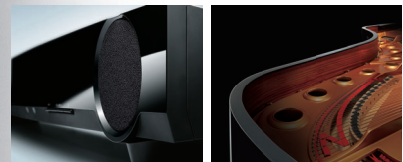
The large speaker units are designed with a focus on simplicity and elegance. As a speaker meant to be visually appreciated, doesn't it convey the impression of Yamaha fine sound quality?

**Beautiful exterior with
mirror finish**

With a fascinating mirror finish that reminds you of a grand piano, this is a beautiful exterior. As the body reflects its surroundings, it blends beautifully into the room interior, creating a space with a powerful image.

**Curved Surface Wafts Out
Surround Sound**

The front is beautifully designed with a gentle curve. This stylish one-bar speaker gives the impression of smoothly wafting out the surround sound to all parts of the room.



Powered by music

Bluetooth[®] compatibility, operation from an app and wireless convenience. All this and more in a one-body unit with built-in subwoofer that offers high sound quality and exhilarating surround sound.



The YAS-103 is available with black and white finish.

Made for



High Sound Quality

- Integrated system equipped with dual front speakers and dual-driver subwoofer
 - Advanced Bass Extension Processing (surround mode only) delivers a surprising abundance of bass sound
 - Large volume cabinet reproduces TV sound with high sound quality
 - Dual-driver subwoofer delivers powerful bass sounds
- Bass reflex port contributes to deeper, richer bass
- Saran net grille enhances sound definition and vocal clarity

Surround Realism

- AIR SURROUND XTREME delivers 7.1-channel surround sound
- Compatible with various surround formats.

Practical Sound Features

- Clear Voice makes dialogue and narrations easy to hear
- UniVolume keeps programmes and commercials at the same volume level
- Audio Delay Control (Lip Sync) adjusts discrepancies between picture and vocals

Full-featured model without *Bluetooth* function.

YAS-93

Front Surround System



* The YAS-93 is also available with white finish.

Smartphone Support (YAS-103 only)

- *Bluetooth* wireless music streaming from smartphone/tablet
- Home Theater Controller App for Easy Operations

Easy to Use and High Quality Design

- Slim, low-profile, one-body design allows positioning in front of a TV
- Can also be hung on a wall
- Built-in IR Flasher for TV remote control signal transmission
- Learning function enables operation from the TV remote control
- Stylish design achieves both visual beauty and ease of use
- Glossy black or white finish matches your flat screen TV

Main Specifications

Digital Amplifier		
Maximum Output Power	Front L/R	30 W + 30 W (6 ohms, 1 kHz, 10% THD)
	Subwoofer	60 W (3 ohms, 100 Hz, 10% THD)
Front Speaker		
		Acoustic suspension type
Drivers		Dual 6.5 cm full range cone
Frequency Response		150 Hz-22 kHz
Subwoofer		
		Bass reflex type
Drivers		Dual 7.5 cm (3") cone
Frequency Response		50 Hz-150 Hz
Terminals		
Input Terminals	Digital	Optical Digital x 2, Coaxial Digital x 1
	Analogue	RCA x 1
<i>Bluetooth</i> (YAS-103 only)		
Version / Audio Codec		Ver. 2.1 + EDR (A2DP, SPP) / SBC, MPEG-4, AAC
General		
Power Consumption		22 W
Standby Power Consumption		0.5 W
Dimensions (W x H x D)		890 x 109 x 121 mm (with stands/brackets)
		890 x 91 x 115 mm (without stands/brackets)
		35" x 4-1/4" x 4-3/4" (with stands/brackets)
		35" x 3-5/8" x 4-1/2" (without stands/brackets)
Weight		4.0 kg; 8.8 lbs.

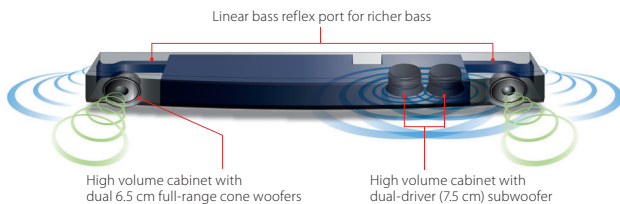


More powerful surround sound
 for more complete listening pleasure.

High Sound Quality

Integrated System with Dual Front Speakers and Subwoofer

The YAS-103 combines two 6.5 cm cone speakers with a dual-driver (7.5 cm cones) subwoofer, driven by a digital amp with a total output of 120W. Yamaha's original Advanced Bass Extension Processing (surround mode only) delivers a surprising abundance of bass for the size, so you never feel the lack of strong bass sound. Although compact, its excellent structural design provides a large volume enclosure for both speakers and subwoofer. The result is powerful, high quality sound that makes TV and movies much more enjoyable.

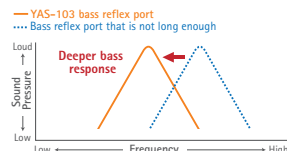
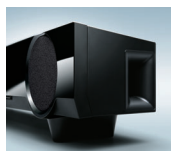


Dual-Driver Subwoofer Powerfully Reproduces Bass Sounds

The dual-driver subwoofer employs large magnets and large-diameter voice coils to realise dynamic and robust bass sound reproduction. This ensures that the overall sound has a rich sense of presence, making movie effect sounds more realistic.

Bass Reflex Port Contributes to Deeper, Richer Bass

The YAS-103 employs a bass reflex port that has a straight shape and adequate length to provide outstanding bass response together with the large volume cabinet. The duct outlet is shaped like a trumpet bell, which reduces wind noise for better sound clarity.



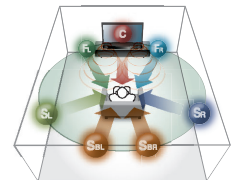
Saran Net Grille Enhances Sound Definition

The grille protecting the speaker unit is a saran net that allows unimpeded sound flow. All sounds, including vocals and music, are clear and pleasant to listen to.

Surround Realism

AIR SURROUND XTREME Provides Powerful Surround Sound.

Yamaha's exclusive AIR SURROUND XTREME reproduces 7.1-channel surround sound with high quality, excellent imaging and rich presence, far superior to that of any other soundbar. You'll experience an extremely realistic and impressive sound field, with clear dialogue in the front and dynamic sound action at the back.



Compatible with Various Surround Sound Formats

The YAS-103 is compatible with popular surround sound formats, such as Dolby Digital and DTS Digital Surround, so you get the full effect of multichannel movie sound.

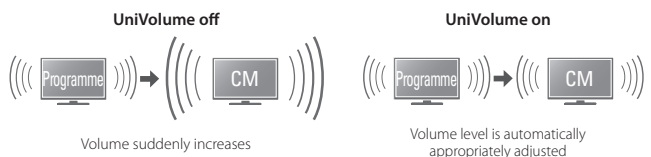
Practical Sound Features

Clear Voice Makes Dialogue and Narrations Easy to Hear

Clear Voice raises the level of dialogue and narrations while maintaining overall sound quality. Movies and TV shows, sports commentary and news broadcasts are more clearly audible.

UniVolume Maintains the Same Volume Level

This welcome feature, made possible by Yamaha-developed technology, maintains a consistent volume level between different channels, programmes, commercials and input sources. It can be switched on and off.



Audio Delay Control (Lip Sync)

This technology adjusts the timing of the picture and dialogue.

With Your Smartphone and a Yamaha App, You Get Much More Flexibility and Convenience.



Bluetooth Wireless Music Streaming from Your Smartphone or Tablet

Enjoy the sound of music or movies from your smartphone or tablet wirelessly. While watching the screen, it's easy to perform select, play and stop operations, as you enjoy sound backed by the power of the YAS-103. Yamaha's exclusive Music Enhancer technology lets you enjoy the depth and freshness of the music as it sounded before compression. There is also a *Bluetooth* standby mode, so by linking to *Bluetooth* on/off via the terminal, you get the convenience of the YAS-103 turning on and off automatically.



Home Theater Controller App for Easy Operation

The YAS-103 is compatible with a free app controller (HT Controller) for iOS and Android. Its easy-to-see and easy-to-use operating screen uses icons to let you easily perform a variety of operations including setting surround programmes or sound quality while watching your smartphone or tablet screen.



Home Menu
 Displays easy-to-understand icons. You can check the YAS-103 settings at a glance.

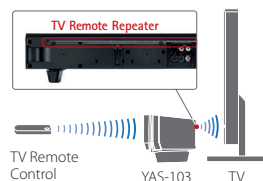


Surround Mode
 The app lets you select five surround modes: Movie, Sports, Game, Music, TV programme. (Remote control only allows stereo/surround selection.)

Easy to use

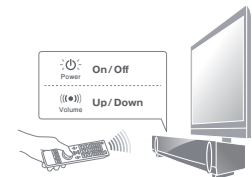
TV Remote Repeater for Signal Transmission

Even if the YAS-103 blocks the TV's remote control signal, the TV Remote Repeater on the back transmits the signal to the TV so operation is not affected.



Learning Function Allows Operation with the TV Remote Control

The YAS-103 can "learn" the TV remote control operation, so you can use the TV remote control to turn the YAS-103 on and off and to adjust its volume.



* "Made for iPod," "Made for iPhone," and "Made for iPad" mean that an electronic accessory has been designed to connect specifically to iPod, iPhone, or iPad, respectively, and has been certified by the developer to meet Apple performance standards. Apple is not responsible for the operation of this device or its compliance with safety and regulatory standards. Please note that the use of this accessory with iPod, iPhone, or iPad may affect wireless performance. AirPlay, iPhone, iPod, iPod classic, iPod nano, iPod touch, and iTunes are trademarks of Apple Inc., registered in the U.S. and other countries. iPad is a trademark of Apple Inc. AirPlay works with iPhone, iPad, and iPod touch with iOS 4.3.3 or later, Mac with OS X Mountain Lion, and Mac and PC with iTunes 10.2.2 or later. • The *Bluetooth*® word mark and logos are registered trademarks owned by *Bluetooth* SIG, Inc. and any use of such marks by Yamaha Corporation is under license. Other trademarks and trade names are those of their respective owners. • Dolby and the double-D symbol are registered trademarks of Dolby Laboratories. • DTS, DTS-HD, the Symbol, & DTS or DTS-HD and the Symbol together are registered trademarks of DTS, Inc.