

5.1-channel AV receiver featuring MusicCast Surround capability and exceptional ease of use for enhanced entertainment options.



*Streaming service availability varies by region.

Audio Features

- 5-channel powerful surround sound
 - 80 W per channel (6 ohms, 20 Hz-20 kHz, 0.09 % THD, 2-ch driven)
 - 115 W per channel (6 ohms, 1 kHz, 0.9 % THD, 1-ch driven)
 - 145 W per channel (6 ohms, 1 kHz, 10 % THD, 1-ch driven)
- HD Audio format decoding: Dolby® TrueHD and DTS-HD® Master Audio
- Full discrete amp configuration
- Direct Mode for high quality sound reproduction
- Low jitter PLL circuitry helps optimise sound imaging
- 3 x Burr-Brown 384 kHz / 32-bit digital-to-analog converters
- High-resolution digital music files playback via USB storage device or a networked computer (FLAC: up to 192 kHz / 24-bit, WAV / AIFF: up to 192 kHz / 32-bit)
- DSD audio playback up to 11.2 MHz
- Apple® Lossless audio playback
- Compressed Music Enhancer for Bluetooth®

Video Features

- HDMI® (4 in / 1 out) with HDR10, Dolby Vision™ and Hybrid Log-Gamma
- 4K Ultra HD Pass-through (4K / 60p, 4:4:4) and HDMI Audio Return Channel
- 4K video upscaling from HDMI input

Advanced Features

- Amazon Alexa voice control compatibility* (*Availability varies by region)
- Ability to add wireless surround speaker/s* (*MusicCast 20 or MusicCast 50)
- MusicCast for audio enjoyment in every room
- Bluetooth for wireless music streaming (SBC / AAC)
- Bluetooth Output for Convenient Music Streaming
- Network functions
 - Built-in Wi-Fi with 2.4GHz/5GHz dual band support
 - Easy Wi-Fi setup i.e. iOS Wi-Fi settings sharing, WPS etc.
 - AirPlay® allows music streaming from Mac, PC, iPod®, iPhone®, iPad®
 - AV Controller app for operating various functions from iOS or Android smartphones and tablets
 - Access to: Internet Radio (airable radio): MP3, WMA Streaming Services (Spotify®*, Pandora®*, Tidal*, Deezer*, Quboz*, JUKE*)
- *Streaming service availability varies by region.
- Music files on PC / NAS: WAV, MP3, WMA, AAC, FLAC, Apple Lossless, AIFF, DSD
- Compatible with streaming from media servers
- Triggered Auto Playback with MusicCast devices

- Gapless playback compatibility allows play without interruption
- Front panel USB Digital Connection for USB thumbdrives
- Multi-language colour OSD capable of displaying cover art (English, German, French, Spanish, Russian, Italian, Japanese and Chinese)
- HDMI CEC with versatile control from AV receiver remote control
- YPAO™ sound optimisation for automatic speaker setup
- Flexible audio / video input assignment
- Ability to change HDMI input while in Standby Through mode
- Audio Delay for adjusting Lip-Sync (0-500ms)
- 40-station preset tuning / Auto preset tuning
- Video out feature (for TUNER / USB / NET / Bluetooth / AUDIO / AUX input)
- Surround Channels assignable for Zone B, or bi-amping front speakers
- Zone B speaker output provides 2-channel sound in a second room
- SCENE buttons with direct power on (BD/DVD, TV, Net and Radio)
 - Quick and simple to use
 - HDMI CEC powers up compatible TVs and Blu-ray Disc™ players

Surround Realism

- HD Audio decoding with CINEMA DSP 3D (17 DSP programmes)
- Compressed Music Enhancer with CINEMA DSP
- DSP Effect Normalisation optimises CINEMA DSP effect
- Virtual CINEMA FRONT provides virtual surround sound
- Dialogue Lift ensures that dialogue comes from the centre of the screen
- Dialogue Level Adjustment for proper sound balance with dialogue and vocals with 5 speakers in front
- Extra Bass enriches the powerful bass sound even with small speakers
- Adaptive DRC (Dynamic Range Control) and Adaptive DSP level
- SILENT CINEMA to enjoy surround sound with headphone

Eco-Friendly Design

- ECO mode operation for about 20 %* less power consumption
 - *Compared to power consumption when ECO mode is off (Yamaha measurement)
- Auto power standby function with variable time setting
- With an advanced energy saving design, This AV receiver achieves a low power consumption of not more than two watts when in Network Standby mode.

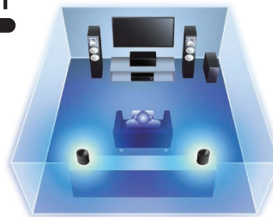
Immerse Yourself in the Sound

Yamaha's original DSP technology (CINEMA DSP 3D) lets you easily create the special sound fields of actual theatres or concert halls in your room and enjoy naturally spacious sound fields



Free and Easy Placement

Wireless Rear combines with wireless streaming speakers, giving you the amazing convenience of a wireless home theatre, for stunningly realistic sound with a clean, clutter-free setup.



Multi-room Audio - MusicCast

MusicCast takes the headache out of multi-room audio. Simply connect all MusicCast devices to the same network and start sharing audio throughout the home. Take MusicCast for a test drive by downloading the free MusicCast app and using it in demo mode.



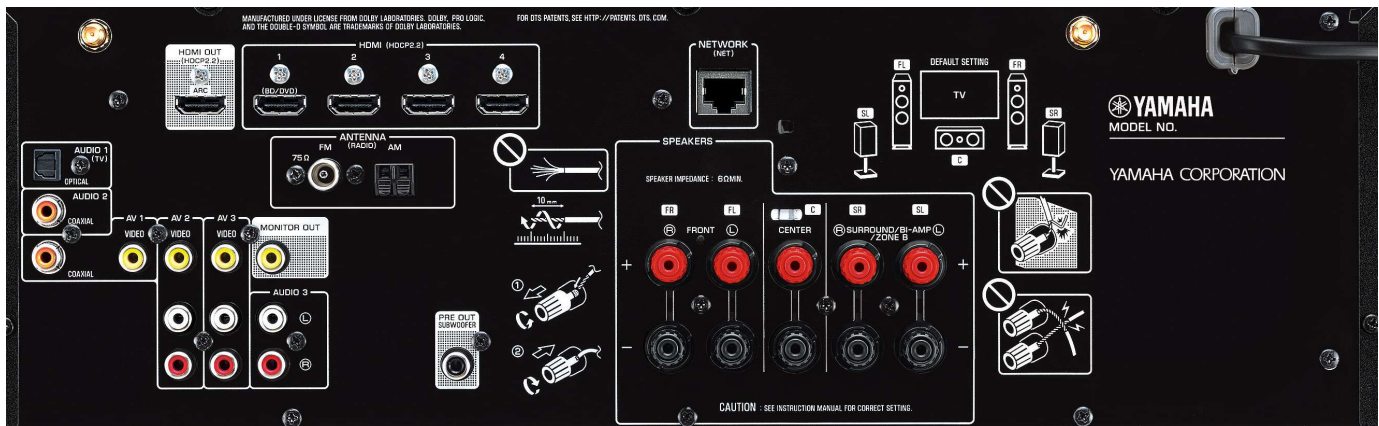
Main Specifications

Audio Section

Rated Output Power (6 ohms, 20 Hz-20 kHz, 0.09 % THD, 2-ch driven)	
Front L/R	80 W + 80 W
Rated Output Power (6 ohms, 1 kHz, 0.9 % THD, 1-ch driven)	
Front L/R	115 W + 115 W
Maximum Effective Output Power (6 ohms, 1 kHz, 10 % THD, 1-ch driven)	
Front L/R	145 W + 145 W
Centre	145 W
Surround L/R	145 W + 145 W
Dynamic Power/Ch (Front L/R, 6/4/2 ohms)	
	110 / 130 / 160 W

General

Standby Power Consumption	
HDMI Control, Standby Through, Network Standby Off	0.1 W
HDMI Control On, Standby Through On, Network Standby Off	1.1 W
Network Standby On	1.8 W (Wireless)
Dimensions (W x H x D) Without Antenna	
	435 x 161 x 327 mm
With Antenna Up	
	435 x 222.5 x 327 mm
Weight	7.7 kg



Extensive Connections

Inputs

HDMI (Assignable, HDCP2.2 HDR10 / Dolby Vision / HLG compatible)	4
Network (Ethernet / Wi-Fi)	1 / 1
USB	1
Radio Antenna (FM / AM)	1 / 1
Optical Digital	1
Coaxial Digital	2
Analogue Audio (incl. Mini Jack Input)	4
Composite Video (Audio Input Assignable)	3

Outputs

HDMI (HDCP2.2, HDR10 / Dolby Vision / HLG and BT.2020 compatible)	1
MONITOR OUT (Composite)	1
Speaker	5-ch
Subwoofer	1
Headphone Jack	1