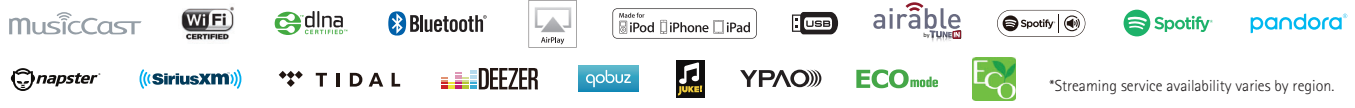


Created by Tradition and Progress

Yamaha has now, for the first time, delivered for the finest sound quality in a network receiver. We've accomplished this by utilising both circuitry design and parts of exceptional quality, by drawing on our legendary Hi-Fi design concept Top-ART (Total Purity Audio Reproduction Technology), and by adopting the sophisticated YPAO™ technology, used in our AV receivers and which earned acclaim as the first auto-calibration technology to be installed in Hi-Fi components. These models are also compatible with our proprietary network system, MusicCast, and provide the finest performance in all areas including sound quality and functionality.



High Sound Quality

- ToP-ART (Total Purity Audio Reproduction Technology) (Symmetrical Circuit Design, ART [Anti-Resolution and Tough] Base)
- Low impedance, high output power amp (Shortest circuit design thoroughly, Equipped with eight power transistors [four each, left/right])
- Powerful power supply (505.20 VA custom-made power transformer, 12,000uF/71V block capacitors)
- YPAO auto-calibration technology for ideal sound (192 kHz / 64-bit YPAO Precision EQ, YPAO-R.S.C [Reflected Sound Control], YPAO Volume)
- Pure Direct Mode for greater sound purity
- High resolution music playback with 192 kHz / 24-bit ESS DAC

Wide Variety of Enjoyment

- Enjoy all your favourite modern music sources (Network Audio, Streaming Services, Bluetooth®, AirPlay®, FM radio)
- Compatible with popular music streaming services, including Spotify® – and newly, Tidal and Deezer
- Digital audio input for TV or Blu-ray Disc™ Player
- Phono Input for vinyl playback

Easy to Use, Elegant Appearance

- MusicCast compatibility with MusicCast app
- Handy trigger control
- Gapless playback compatibility
- Simple yet sophisticated design

Yamaha Eco-Products

With an advanced energy saving design, this product achieves a low power consumption of not more than two watts when in Network Standby mode.



Yamaha Eco-Label
Yamaha Eco-Label is a mark that certifies products of high environmental performance.

Specifications

Output Power	
Minimum RMS Power	100 W + 100 W (8 ohms, 20 Hz–20 kHz, 0.019 % THD)
Maximum Power	145 W + 145 W (8 ohms, 1 kHz, 10 % THD)
Dynamic Power per Channel (8/6/4/2 ohms)	140 W / 170 W / 220 W / 290 W
Network	
LAN (DLNA ver. 1.5 (DMR)), Wi-Fi	
Supported Format	
MP3, WMA, MPEG4 AAC 48 kHz / 320 kbps	
WAV, FLAC, AIFF 192 kHz / 24-bit, ALAC 96 kHz / 24-bit	
DSD 2.8 / 5.6 MHz	
Bluetooth	
(Version) 2.1 + EDR, (Profile) A2DP, AVRCP	
(Audio codec) SBC, AAC* *Receiving only.	
Terminals	
(Input) Analogue Audio (CD, PHONO, LINE 1, LINE 2, LINE 3) :5	
Optical Digital :2, Coaxial Digital :2, USB :1	
(Outputs) Analogue Audio (Line2, Line3) :2, Headphone :1	
Subwoofer :1, Speaker :2 (4 terminals), Trigger out:1	
Tuner	
FM / AM	
Standby Power Consumption	
0.1 W	
1.8 W (Wired, Network standby on)	
1.8 W (WiFi, Network standby on)	
1.9 W (Wireless Direct, Network standby on)	
1.8 W (Bluetooth, Network standby on)	
Dimensions (W x H x D)	
435 x 151 x 392 mm; 17-1/8" x 6" x 15-7/16" (without antenna)	
435 x 215 x 392 mm; 17-1/8" x 8-1/2" x 15-7/16" (with antenna up)	
Weight	
11.0 kg; [24.3 lbs]	
Supplied Accessories	
Owner's manual, Remote control, Batteries (x 2), Power cord, YPAO microphone, FM Antenna cord, AM Antenna cord	

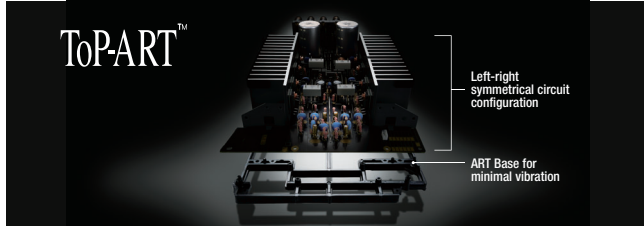


Black

High Sound Quality

**Yamaha's Legendary Hi-Fi Design Concept
ToP-ART (Total Purity Audio Reproduction Technology)**

The design of this unit is a direct descendent of Yamaha's legendary Hi-Fi design concept ToP-ART, which strives to faithfully preserve the integrity of the audio signals by combining a meticulously symmetrical left/right circuit layout and signal directness (straightest, shortest signal paths) with a low-vibration chassis of high rigidity, equipped with the special resin frame "Art Base" that absorbs and blocks unnecessary vibration. It maintains sonic purity and accurate stereo image of the music to create unshakeable drivability.



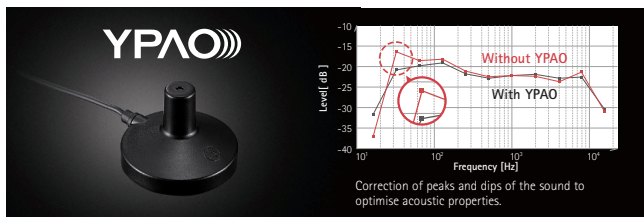
Low Impedance, High Output Power Amp

The power amp block adopts a symmetrical and direct circuit layout based on the ToP-ART concept, featuring a parallel push-pull structure using a total of eight bipolar type power transistors (four each, on left and right) as its output terminals. And by minimising the lengths of the audio signal paths in the circuit design, we've lowered impedance to achieve superb drive power with a maximum output of 145 watts (per channel).

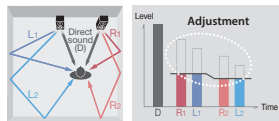
YPAO™ for Ideal Sound (Yamaha Parametric Room Acoustic Optimizer)

For the first time in a Hi-Fi receiver, the R-N803 is equipped with the Yamaha Parametric room Acoustic Optimizer (YPAO), a famed technology used in Yamaha's AV receivers. It measures the shape of the room, the material of the wall and the position of the speaker, and then automatically adjusts the sound to create the ideal response and sonic quality. The unit also features other advanced YPAO functions, including YPAO-R.S.C (Reflected Sound Control), which actively corrects the important early reflection sounds that greatly influence sound quality, and YPAO Volume, which applies exceptionally high-precision EQ (equalization), with 192 kHz / 64-bit operation. The result? You can create an ideal listening environment right in your home, just like that of a professional audio listening room. Moreover, you can control the YPAO feature and display the analysis results by using a MusicCast app.*

* To be supported in future firmware updates.

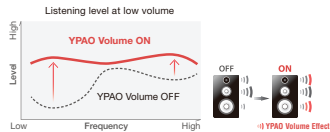


Effects of YPAO-R.S.C



Reflected Sound Control suppresses early reflections that make the sound muddy and indistinct.

YPAO Volume



• AirPlay works with iPhone, iPad, and iPod touch with iOS 4.3.3 or later. Mac with OS X Mountain Lion or later, and Mac and PC with iTunes 10.2.2 or later. Supports iOS 7 or later for setup using Wireless Accessory Configuration. *Made for iPod, **Made for iPhone, and *Made for iPad mean that an electronic accessory has been designed to connect specifically to iPod, iPhone, or iPad, respectively, and has been certified by the developer to meet Apple performance standards. Apple is not responsible for the operation of this device or its compliance with safety and regulatory standards. Please note that the use of this accessory with iPod, iPhone, or iPad may affect wireless performance. AirPlay, iPad, iPhone, iPod, iPod touch are trademarks of Apple Inc., registered in the U.S. and other countries. • Android is a trademark of Google Inc. • The Bluetooth® word mark and logos are registered trademarks owned by Bluetooth SIG, Inc. and any use of such marks by Yamaha Corporation is under licence. Other trademarks and trade names are those of their respective owners. • The Wi-Fi CERTIFIED Logo is a certification mark of the Wi-Fi Alliance. The Wi-Fi Protected Setup Identifier Mark is a mark of the Wi-Fi Alliance. "Wi-Fi", "Wi-Fi Protected Setup", "Wi-Fi Direct" and "Miracast" are marks or registered marks of the Wi-Fi Alliance. • Spotify and Spotify logo are registered trademarks of the Spotify Group. • Napster and the Napster logo are trademarks and registered trademarks of Rhapsody International. • JUKE and JUKE logo are registered trademarks of Media-Saturn-Holding GmbH. • TIDAL and TIDAL logo are registered trademarks of Aspiro AB in the European Union and other countries. • Deezer and Deezer logo are international trademarks of Deezer S.A., registered in France and other countries. • DLNA™ and DLNA CERTIFIED™ are trademarks or registered trademarks of Digital Living Network Alliance. All rights reserved. Unauthorized use is strictly prohibited.

**Supports High Resolution Music with
ESS 192 kHz / 24-bit DAC**

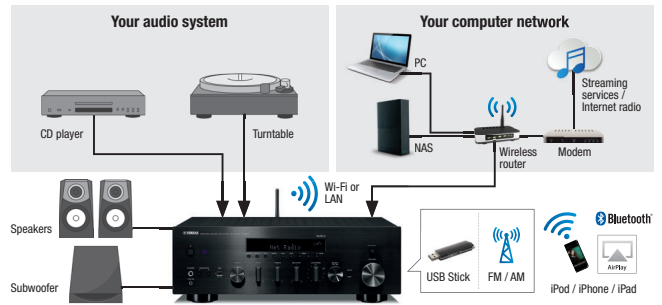
The R-N803 is compatible with high-resolution sound sources of DSD 5.6 MHz native and AIFF / WAV / FLAC 192 kHz / 24-bit, as well as Apple Lossless 96 kHz / 24-bit. It uses the renowned SABRE 9006AS 192 kHz / 24-bit DAC (from ESS technology) to deliver superior S/N performance. Combined with Yamaha's original network module, the unit thoroughly draws out all the sonic merits of high-resolution sound sources, effectively reproducing even the subtle ambience of concert halls and delicate expressive nuances in the sound.



Wide Variety of Enjoyment

Enjoy All Music Sources

This network receiver, of course, lets you enjoy music from CD players and turntables, but it also can play music you have stored on USB thumb drives, computer or NAS (network-attached storage). Moreover, with just this single device, you can play wireless music in smart phones or tablets using Bluetooth® or AirPlay®, as well as a variety of music from various streaming services, and FM / AM.



Digital Audio Input for TV or Blu-ray Disc™ Player

This model is equipped for digital audio input with both optical and coaxial terminals. The optical is for receiving audio from a TV, and the coaxial for receiving audio from a Blu-ray Disc™ player. The audio stays in the digital domain, giving you pure, pristine dynamic sound for all your entertainment sources, from sports and other programmes to movies and concerts.



Phono Input for Vinyl Playback

This model provides Phono input terminals. Connect a turntable and you can enjoy music from your vinyl collection.



Easy to Use

MusicCast CONTROLLER for Easy Operation

Control. It's all in the palm of your hands – with the free MusicCast CONTROLLER app. Simply tap and flick on the intuitively designed screen, and easily operate all of your MusicCast devices, as well as the R-N803.

